

2011-2012

Factbook

Year of the Student



**DELTA STATE
UNIVERSITY** 

2011-2012 Factbook

Eric Atchison, Research and Information Specialist
Marcie Behrens, Assessment and Planning Specialist
Rahat Rashid, Research and Information Specialist
Justin Chandler, Research and Information Specialist
Rhonda Loper, Research and Information Specialist
Suzanne Simpson, Director

Year of the Student



Office of Institutional Research and Planning
Kent Wyatt Hall, Suite 152
(662) 846-4050
ir@deltastate.edu

Table of Contents

Preface

<i>Table of Contents</i>	III & IV
<i>Purpose</i>	V

General Information

<i>Board of Trustees (IHL)</i>	7
<i>President's Cabinet & Academic Council</i>	8 & 9
<i>Staff Council and Faculty Senate</i>	10
<i>Organizational Chart</i>	11
<i>Historical Sketch</i>	12
<i>Institutional Vision & Mission</i>	13
<i>Guiding Principles</i>	14-16
<i>University Characteristics</i>	17&18

New Students

<i>New Student Applications</i>	20
<i>First-Time In-State Freshmen by County</i>	21
<i>ACT Scores of First-Time Entering Freshmen</i>	22
<i>ACT Data for Entering Freshmen</i>	23
<i>Feeder High Schools for ACT Tested Freshmen - In-State</i>	24
<i>Transfer Students by In-State Institution</i>	25

Enrollment

<i>Enrollment of MS Institutions by Level</i>	27
<i>Enrollment of MS Institutions by Headcount and FTE</i>	28
<i>Enrollment of Students by Status: 10-Year Trend (On and Off Campus)</i>	29
<i>Enrollment of Students by Class: 10-Year Trend (On and Off Campus)</i>	30
<i>Enrollment of Students by Race: 10-Year Trend (On and Off Campus)</i>	31
<i>Enrollment of Students by School: 10-Year Trend (On and Off Campus)</i>	32
<i>Enrollment Summary of Students by Race: (On and Off Campus)</i>	33
<i>TFA Summer Institute Enrollment Summary of Students by Race</i>	34
<i>Enrollment by Level: 5-Year Trend (Off Campus/Dual)</i>	35
<i>Enrollment of Graduate Students by Academic Level (On and Off Campus)</i>	36
<i>Enrollment by Age Distribution: Full Time & Part Time</i>	37
<i>Enrollment by Age Distribution: Level & Ethnicity</i>	38
<i>Active Enrollment By College</i>	39 & 40
<i>Enrollment In-State Students by County</i>	41
<i>Enrollment of Students by Mississippi Counties: 5-Year Trend</i>	42 - 44

Credit Hour Production

<i>Credit Hour Production</i>	46 & 47
<i>On/Off Campus Student Credit Hour Summary by Discipline</i>	48 & 49

Table of Contents

	Degrees
<i>Academic Program Inventory/Accrediting Bodies</i>	51 - 53
<i>Degrees Awarded by Type of Degree: 5-Year Trend</i>	54
<i>Combined Degrees by Major: Dec. 2010 & May 2011</i>	55 & 56
<i>Graduates by Race, Gender, and College Combined</i>	57
<i>Graduates with Honors</i>	58
	Retention
<i>All First-Time, Full-Time Entering Freshmen</i>	60
<i>All First-Time, Full-Time Entering Freshmen (White)</i>	61
<i>All First-Time, Full-Time Entering Freshmen (Black)</i>	62
<i>All First-Time, Full-Time Entering Freshmen (Other)</i>	63
<i>All First-Time, Full-Time Entering Freshmen (Male)</i>	64
<i>All First-Time, Full-Time Entering Freshmen (Female)</i>	65
<i>All First-Time, Full-Time Entering Freshmen (Pell)</i>	66
<i>All First-Time, Full-Time Entering Freshmen (Non-Pell)</i>	67
<i>All First-Time, Full-Time Entering Freshmen (Title IV Subsidized Stafford)</i>	68
<i>All First-Time, Full-Time Entering Freshmen (Non-Subsidized Recipients)</i>	69
<i>All First-Time Entering Freshmen (U.S. Citizens/Resident Aliens)</i>	70
	Faculty and Staff
<i>Summary Faculty by Race & Gender</i>	72
<i>DSU Total Faculty & Staff Full-time & Part-time</i>	73
<i>DSU Faculty/Instructor Degrees</i>	74
	Resources
<i>Men & Women Room Comparative Report: 5-Year Trend</i>	76
<i>Financial Aid Summary</i>	77
<i>Roberts-LaForge Library Collections and Utilizations</i>	78
<i>Intercollegiate Athletics</i>	79 & 80
<i>Tuition and Fees</i>	81
<i>Tuition 5-Year Trend</i>	82
	Glossary
<i>List of Course Prefixes</i>	84
<i>List of Degrees</i>	85
<i>Other Terminology</i>	86



The Delta State University Factbook is an annual publication that provides a ready source of information to answer questions frequently asked about the University. This edition contains a statistical overview of operations for the 2011-2012 academic year. Included is information, both past and present, concerning enrollment, student characteristics, faculty characteristics, revenue, and expenditures. Its primary purpose is to promote understanding for those seeking information about Delta State University.

During the summer of 2010, Delta State University hosted its first Teach for America Summer Institute which brought over 800 TFA corps members and staff to the campus. During the five-week training program each corps member was granted the option to enroll in three different CUR courses. The TFA Institute registered 896 students for these courses in 2011. These figures are included in the fall enrollment report and were submitted to IHL as part of the official university headcount. An extra page has been added to Section III (Enrollment) which provides a breakdown of the TFA student information and footnotes have been provided to inform the large changes observed for the trend data. Also, Section IV (Credit Hour Production) includes credit hours produced by the TFA Summer Institute participants. This information is footnoted as well on the selected pages.

Most of the information in this edition was obtained from statistical reports published by the Board of Trustees of State Institutions of Higher Learning, State of Mississippi. The data submitted to the Board of Trustees for this report represents not only the work of the Office of Institutional Research and Planning but also of various administrative offices such as Registrar, Enrollment Services, Human Resources, Academic Affairs, Financial Assistance, Student Affairs, Office of Information Technology, Athletics, University Relations, Alumni Affairs, and Library Services. Without the continued assistance and cooperation of these groups, this publication would not be possible. We extend to them our sincere appreciation.

The Office of Institutional Research and Planning, in its on-going effort to provide timely management information, encourages your comments and suggestions for improvement. We hope you find this edition of the Factbook both informative and useful.

**Office of Institutional Research and Planning
Kent Wyatt Hall 152
Delta State University
Cleveland, MS 38733**



General Information

**DELTA STATE
UNIVERSITY** 

Institutions of Higher Learning Board of Trustees

*Ed Blakeslee, Vice President
Gulfport*

*Ms. Christine L. Pickering
Biloxi*

*Dr. L. Stacy Davidson, Jr.
Cleveland*

*Robin J. Robinson, President
Laurel*

*Dr. Bettye Henderson Neely
Grenada*

*Mr. Scott Ross
West Point*

*Mr. Bob Owens
Terry*

*Dr. Douglas W. Rouse
Hattiesburg*

*Mr. Aubrey Patterson
Tupelo*

*Mr. C.D. Smith, Jr.
Meridian*

*Mr. Alan W. Perry
Jackson*

*Ms. Amy Whitten
Oxford*

Dr. Hank M. Bounds, Commissioner of Higher Education



*3825 Ridgewood Road
Jackson, MS 39211-6453
(601) 432-6623 (phone)
(601) 432-6972 (fax)*

President's Cabinet

<i>John M. Hilpert, Ph.D.</i>	<i>President</i>
<i>H. Wayne Blansett, Ed.D.</i>	<i>Vice President, Student Affairs</i>
<i>Keith Fulcher, M.Ed.</i>	<i>Executive Director, Alumni-Foundation</i>
<i>Debbie Heslep, Ed.D.</i>	<i>Dean, Enrollment Management/Director, Admissions Marketing</i>
<i>Ann Lotven, Ed.D.</i>	<i>Provost and Vice President, Academic Affairs</i>
<i>Jeremy McClain, M.B.A.</i>	<i>Director, Athletics</i>
<i>Albert Nylander, Ph.D.</i>	<i>Dean, Graduate & Continuing Studies</i>
<i>Brett Oleis, M.C.A.</i>	<i>Faculty Senate President</i>
<i>Greg Redlin, M.B.A.</i>	<i>Vice President, Finance and Administration</i>
<i>Michelle M. Roberts, Ed.D.</i>	<i>Vice President, University Relations</i>
<i>Myrtis S. Tabb, Ed.D.</i>	<i>Associate Vice President, Finance & Administration</i>



Academic Council

Lizabeth Carlson, D.S.N

Dean, School of Nursing

John Elliott, M.A.

Registrar

Leslie Griffin, Ed.D.

Dean, College of Education

Paul Hankins, D.M.A.

Interim Dean, College of Arts and Sciences

Debbie Heslep, Ed.D.

Dean, Enrollment Management/Director, Admissions Marketing

Ann Lotven, Ed.D.

Provost and Vice President, Academic Affairs

Brett Oleis, M.C.A.

Faculty Senate President

Beverly Moon, Ph.D.

Dean, Research, Assessment, and Planning

Billy Moore, Ph.D.

Dean, College of Business

Albert Nylander, Ph.D.

Dean, Graduate and Continuing Studies

Jeff Slagell, M.A.

Dean, Library Services



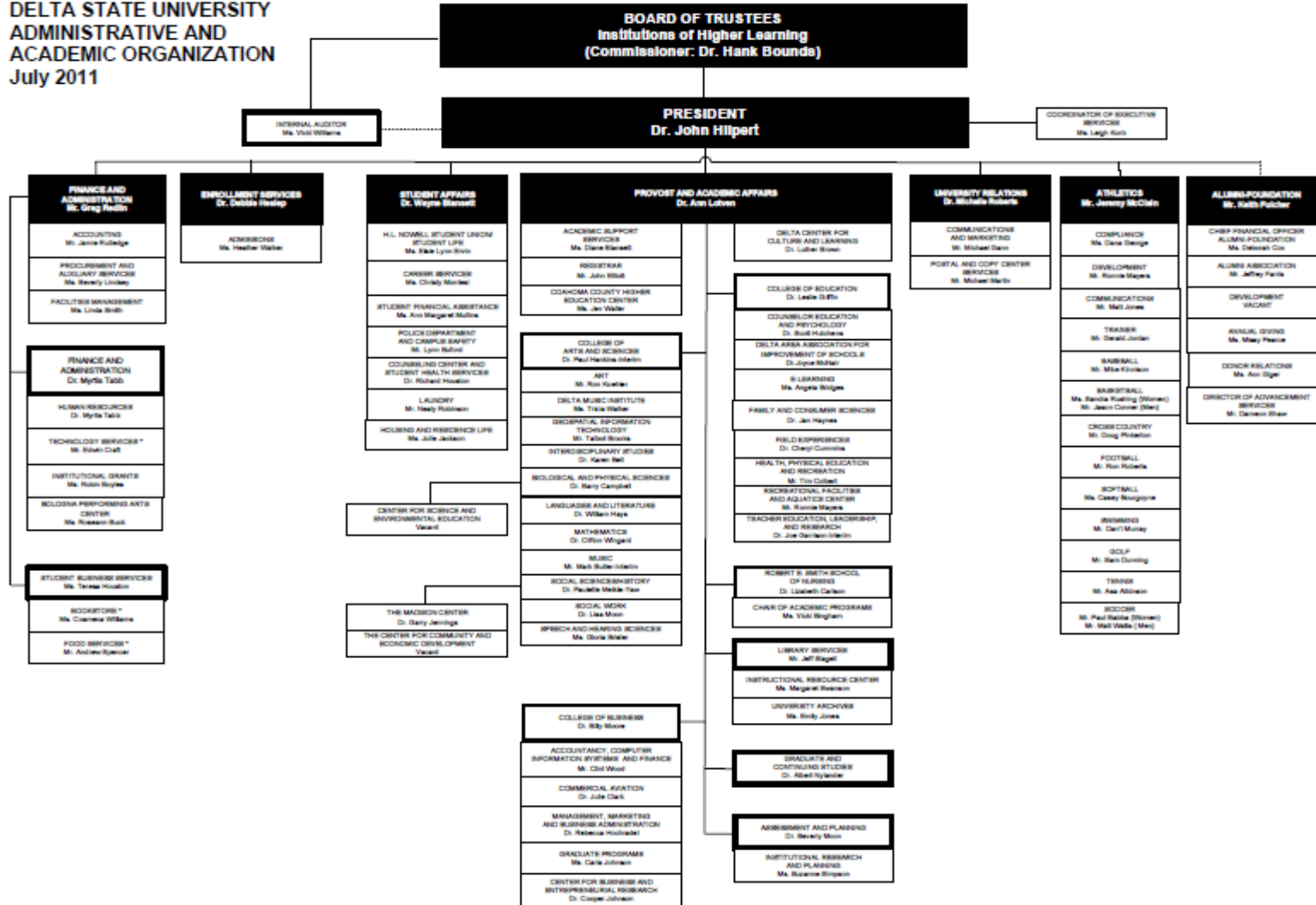
Staff Council

<i>Suzanne Simpson</i>	<i>Chair</i>
<i>Matt Jones</i>	<i>Chair-Elect</i>
<i>Bevin Lamb</i>	<i>Executive Secretary/Treasurer</i>
<i>Dana George</i>	<i>Past-Chair</i>
<i>Julie Jackson</i>	<i>Ombudsperson</i>
<i>Loyd McDowell</i>	<i>Public/University Relations Coordinator</i>
<i>Bert Herbison</i>	<i>Chair- Incentives and Recognition Committee</i>
<i>Vicki Williams</i>	<i>Chair- Projects Committee</i>
<i>Christy Riddle</i>	<i>Chair- Salaries & Benefits Committee</i>
<i>Leigh Pickard</i>	<i>Chair- Staff Development Committee</i>

Faculty Senate

<i>Brett Oleis</i>	<i>President</i>
<i>Ellen Green</i>	<i>President-Elect</i>
<i>Eckward McKnight</i>	<i>Past President</i>
<i>Stephen Patton</i>	<i>Secretary</i>
<i>Pat Brown/Karen Bell</i>	<i>Co-Chairs-Committee on General Academic Affairs</i>
<i>Don Allen Mitchell</i>	<i>Chair-Committee on University Standing Committees</i>
<i>David Hebert</i>	<i>Chair-Committee on Elections</i>
<i>Stephen Patton</i>	<i>Chair-Committee on Technology</i>
<i>Ellen Green</i>	<i>Chair-Committee on University Services</i>

**DELTA STATE UNIVERSITY
ADMINISTRATIVE AND
ACADEMIC ORGANIZATION
July 2011**



* Managed by external entity

History

Delta State University was created as Delta State Teachers College by Senate Bill Number 263, Chapter 284, entitled An Act to Create and Establish the Delta State Teachers College. Governor Henry L. Whitfield signed the bill on April 9, 1924. Cleveland and Bolivar County provided the College's first physical facilities in the form of three buildings that formerly housed the Bolivar County Agricultural High School. The institution opened for its first regular session on September 15, 1925, with a faculty and staff of eleven and a student body of ninety-seven.

The College's first president, Mr. James Wesley Broom, died during Delta State's first session. He was succeeded by Dr. W. M. Kethley, who served as president from 1926 to 1956. Dr. James M. Ewing became the third president on September 1, 1956, and served until his retirement on July 31, 1971. Dr. Aubrey K. Lucas served as the institution's fourth president from August 1, 1971, until June 30, 1975. On July 1, 1975, Dr. Forest Kent Wyatt became the fifth president, and he served until his retirement on June 30, 1999. He was succeeded by Dr. David L. Potter on July 1, 1999, who served as sixth president until March 9, 2003. Dr. John M. Hilpert became Delta State University's seventh president on September 1, 2003.

The growth and expanding mission of the institution are evidenced by its name change in 1955 to Delta State College. In 1969 Delta State was authorized to reorganize its academic structure into four schools. The School of Arts and Sciences and the School of Business were activated in 1969, and the School of Education and School of Graduate Studies were implemented in 1970. A School of Nursing was authorized in 1977 and began operation in 1978. On March 15, 1974, the institution was officially designated Delta State University to reflect its continued growth and expanded scope.

When created in 1925, Delta State was authorized to offer only the Bachelor of Science degree in Education. The first such degrees were conferred in June 1928. Undergraduate degrees are now offered in the arts, sciences, humanities, business, nursing, commercial aviation, and education.

From a small teacher-training institution in the 1920's, Delta State has grown into a multi-purpose university with a strong focus on high-quality classroom instruction. Enrollment has increased to more than 4,000 students, and corresponding growth has occurred in physical facilities. The growth and success of the University are tributes to the dedication of the faculty and staff, the hard work of the students, and the strong support of the Delta community and state legislature.

In 1965, the University initiated a graduate program, and the first Master of Education degrees were conferred in May, 1966. Delta State University now offers Master's degrees in the areas of business, commercial aviation, education, natural and social sciences, and nursing, as well as the Educational Specialist degree and Doctor of Education in professional studies.

Vision and Mission

Vision

Students at Delta State University will learn and grow in an environment that fosters discovery and creativity. The institution intends to be the best regional university in America as it combines a heritage of academic strength with a robust commitment to serving people and communities, particularly in the Mississippi Delta.

Institutional Mission

As a regional Carnegie Master's I university located in Cleveland, Mississippi, Delta State University serves as an educational and cultural center of the Mississippi Delta emphasizing service to the Northern Delta Counties and its campus centers in Clarksdale and Greenville. The University offers undergraduate, graduate, and continuing education programs of study leading to baccalaureate and master's degrees in the Colleges of Arts and Sciences, Business, Education, and the School of Nursing, as well as a Doctorate in Education. Emphasis is placed on excellence in instruction, followed by service and research, in the creation of a community of scholars.

With special attention to small classes, a friendly environment, and a broad liberal arts foundation, the University encourages significant student-faculty interactions. Delta State provides programs and services which promote intellectual, cultural, ethical, physical, and social development. Students from different cultural, socioeconomic, and ethnic backgrounds will develop the ability to respect and evaluate the thoughts of others; to develop, assess, and express their own thoughts effectively; and to use the techniques of research and performance associated with their disciplines.

Approved by the Board of Trustees of State Institutions of Higher Learning, March 18, 2004.

Guiding Principles

Commitment to Quality in Academic Programs

Acknowledging its beginnings as a teacher's college, the University sustains excellence in teacher education while also continuing to expand offerings in traditional as well as new areas of study. From the core disciplines such as arts, humanities, and sciences to unique programs such as commercial aviation and community development, the University is committed to meeting the ever-changing and evolving needs of the students it serves. It sustains quality in those programs by maintaining accreditation of all programs for which an accrediting agency exists.

Commitment to Learning, Scholarship, and Student Engagement

Delta State provides programs that cultivate intellectual curiosity and promote scholarship among its students. Through a state-of-the-art library supplemented by a campus network of computer labs, students have access to a full range of information resources in support of learning. The University also acknowledges the importance of student engagement as central to successful learning. Toward that end, the University has dedicated its quality enhancement plan as required for regional accreditation to increased student engagement. In support of community engagement and service-learning experiences for students, the University has created an office and a faculty role to sustain those efforts.

Support for the Arts

Delta State recognizes the need for a vibrant creative and performing arts program for its students and the region. The renovation of Jobe Hall provides a state-of-the-art theatre facility for student productions. Through the Bologna Performing Arts Center, the Delta Music Institute, the Janice Wyatt Summer Arts Institute, and a partnership with the Delta Arts Alliance, the University ensures the preservation and enhancement of the arts throughout the region.

Encouragement of Innovation and Experimentation

Delta State endorses the principles of innovation and experimentation, and makes them a part of its institutional culture. The University acknowledges the importance of an environment where students and faculty can undertake risks and experiment with new ideas.

Guiding Principles

Respect for People and Ideas

Delta State promotes mutual respect, teamwork, fairness, and integrity. The University is diligent in working to create a climate where students, employees, and constituents are valued and nurtured. Through an ongoing re-engineering project, the University converts these principles into action.

Commitment to a Student-Centered Campus

Delta State promotes a campus culture that fosters student development. From an array of student services to a nationally recognized athletic program, the University is dedicated to ensuring that the full range of student needs and interests are met.

Commitment to Institutional Effectiveness

Delta State acknowledges its role as a public institution funded largely by the citizens of Mississippi. In recognition of that public trust, the University is committed to high standards of excellence with appropriate emphasis on effectiveness and productivity.

Commitment to Regional and Economic Development

Delta State, in partnership with various organizations, will advance community and economic development in the Delta region to improve the quality of life and raise the educational level of its citizens. Special attention is given to collaboration with our educational partners: Mississippi Valley State University, Coahoma Community College, Mississippi Delta Community College, the Mississippi Department of Education, and the K-12 schools of the Delta. Moreover, the Delta Center for Culture and Learning, the Capps Archives, the Center for Business Research, and the Center for Community and Economic Development provide a structure to ensure University participation in promoting and celebrating the unique heritage of the Delta while also addressing the longstanding social, economic, and cultural challenges that inhibit advancement.

Guiding Principles

Commitment to Leadership

Delta State is actively involved in providing programs that train leaders for the twenty-first century. Through partnerships with the Kellogg Foundation, Delta Council, the Delta Regional Authority, and other Delta organizations committed to advancement in the region, the University is confident it can make a difference in the quality and training of the leaders who will serve on behalf of future generations.

Commitment to Teaching and Faculty Development

The quality of Delta State's academic programs is central to its educational mission. That quality is affirmed through a dedicated faculty with credentials appropriate to their disciplines. The University supports high standards of quality among its faculty and maintains those standards through the Technology Learning Center, a modern faculty development office dedicated to the application of technology to teaching, and through the Kent and Janice Wyatt Faculty Development Program, a University Foundation initiative that provides resources for faculty growth.

Commitment to Health

Delta State acknowledges the importance of physical health for its students and the region and extends its resources in support of that goal. Through undergraduate and graduate programs in nursing and pre-professional programs in the sciences, the University provides health care practitioners to serve the State. The University works as the leading partner in the Delta Health Alliance, a collaborative effort with other Delta stakeholders that conducts research and provides education on the health care needs of the region.

Approved by the Board of Trustees of State Institutions of Higher Learning, March 18, 2004.

University Characteristics

Location

Delta State University is located in Cleveland, Mississippi, in the heart of the Mississippi Delta. The campus consists of 331.54 acres of land within or adjoining the western corporate limits. Cleveland is considered a rural city with a population of 12,334 and is situated in Bolivar County, which has a population of 34,145 (US Census, 2010). The nearest urban city is 110 miles north in Memphis, TN. The nearest international airport is also located in Memphis. Regional airport facilities are located in Greenville, MS which is 40 miles southwest of Cleveland, and the nearest municipal airport is located within Cleveland's city limits.

Academic Year

The University operates on the semester system with the fall semester beginning in August and ending before Christmas. The spring semester begins in January and ends in May. There are two four-week summer sessions. Additionally, DSU hosts two intersessions; one between fall and spring semesters and one between spring and summer sessions.

Enrollment

The total enrollment for Fall 2011 was 4,624. The total off-campus enrollment for Fall 2011 was 238; 18 in Clarksdale, 17 in Greenville, and 203 in other locations. Students came from 51 states and 23 foreign countries.

Student Fees

Tuition and fees for Mississippi residents are \$2,644 and for non-residents \$6,844 per semester. An average room fee is \$1,930 and average meal plan is \$1,245 per semester.

Student Characteristics

*Average age of Freshmen - 19 Average age of Undergraduates - 22
FTE Student/FTE Faculty ratio - 2nd Year Retention Rate: 62%*

Housing

The University has 10 residence halls with an overall capacity of 1,249. A total of 806 students occupied student housing in Fall 2011. There are eight national fraternities and six national sororities. Approximately 16% of the undergraduate men are members of a fraternity and 13% of the women are members of a sorority.

Athletics

The University is a member of the National Collegiate Athletic Association (NCAA) at the Division II level. Approximately 12% of the undergraduate student population are athletes.

University Characteristics

Accreditation

Delta State University is accredited by the Commission on Colleges of the Southern Association of Colleges and Schools to award bachelors, masters, specialists and doctoral degrees.

Degrees

The University offers twelve Bachelor's degrees, ten Master's degrees, one Specialist degree and one Doctoral degree. In 2011-12, DSU awarded 503 bachelor's, 241 master's, 34 specialist's, and 2 doctoral degrees.

Library

The Roberts-LaForge Library collections consist of 374,284 bound volumes and U.S. government documents, 832,822 microforms, and 24,018 journal subscriptions.

Fine Arts

The Fielding-Wright Art Center houses the art department and contains three galleries for hanging exhibitions. The Holcombe-Norwood addition to the art center was opened in Fall, 1994 and the Bologna Performing Arts Center was completed in Spring, 1995.

Computer Labs*

Building	Number of Computers	Types of Computers
Art	10	Macintosh/Personal Computers
Athletics	11	Personal Computers
Broom Hall	107	Personal Computers
DMI	13	Macintosh
Ewing Hall	32	Personal Computers
GIT	32	Personal Computers
Java City	2	Personal Computers
Journalism	20	Macintosh
Kethley	21	Personal Computers
Library	130	Personal Computers
Music	15	Personal Computers
Nursing	51	Personal Computers
Walters Hall	89	Personal Computers
Total	533	Computers

** Provided by the Office of Information Technology, October 2012*



New Students

**DELTA STATE
UNIVERSITY** 

New Student Applicants Fall 2011

Number of Applications Received

	<i>Freshman</i>		<i>CC-Transfer</i> ¹		<i>SC-Transfer</i> ²		<i>Re-admitted</i>		<i>APT Student</i> ³		<i>Non-Form/Over 21</i> ⁴		<i>Audit</i>		<i>Senior Citizen</i>		<i>Total Under-graduates</i>	<i>Graduates</i>	<i>University Total*</i>
	#	%	#	%	#	%	#	%	#	%	#	%	#	%	#	%	#	#	#
<i>In-State</i>	1,143	75%	631	94%	235	72%	195	98%	115	96%	39	83%	1	100%	10	100%	2,369	518	2,887
<i>Out-of-State</i>	385	25%	40	6%	90	28%	5	3%	5	4%	8	17%	0	0%	0	0%	533	1012	1,545
<i>Unk. Residence</i>	0	0%	0	0%	0	0%	0	0%	0	0%	0	0%	0	0%	0	0%	0	0	0
<i>Male</i>	634	41%	219	33%	143	44%	67	34%	56	47%	28	60%	0	0%	2	20%	1,149	413	1,562
<i>Female</i>	893	58%	451	67%	182	56%	133	67%	64	53%	19	40%	1	100%	8	80%	1,751	1111	2,862
<i>Unk. Gender</i>	1	0%	1	0%	0	0%	0	0%	0	0%	0	0%	0	0%	0	8%	2	0	2
<i>White</i>	911	60%	337	50%	128	39%	78	39%	114	95%	19	40%	0	0%	6	60%	1,593	968	2,561
<i>Black</i>	597	39%	328	49%	188	58%	120	60%	1	1%	26	55%	1	100%	4	40%	1,265	372	1,637
<i>Other</i>	20	1%	6	1%	9	3%	2	1%	5	4%	2	4%	0	0%	0	8%	44	198	242
<i>TOTAL</i>	1,528	34.8%	671	15.3%	325	7.4%	200	5%	120	3%	47	1%	1	0%	10	100%	2,902	1,530	4,432

¹ Community College Transfer

² Senior College Transfer

³ Advanced Placement

⁴ Non traditional students over 21 years of age

*University Total is duplicated

Source: DSU Admissions & Office of Institutional Research & Planning

Date: October 2012

First-Time In-State Freshman by County

Fall 2011

<i>County of Residence</i>	<i>Total Students</i>	<i>County of Residence</i>	<i>Total Students</i>
Adams	3	Leflore	8
Alcorn	0	Lincoln	1
Amite	0	Lowndes	2
Attala	1	Madison	6
Benton	0	Marion	0
Bolivar	52	Monroe	0
Calhoun	0	Montgomery	2
Carroll	1	Neshoba	1
Chickasaw	0	Newton	0
Choctaw	1	Noxubee	0
Claiborne	0	Oktibbeha	0
Clarke	0	Panola	7
Clay	0	Pearl River	1
Coahoma	10	Perry	0
Copiah	2	Pike	1
Covington	0	Pontotoc	3
De Soto	33	Prentiss	1
Forrest	2	Quitman	5
Franklin	0	Rankin	13
George	0	Scott	1
Greene	0	Sharkey	5
Grenada	5	Simpson	11
Hancock	1	Smith	0
Harrison	0	Stone	0
Hinds	6	Sunflower	0
Holmes	2	Tallahatchie	5
Humphreys	4	Tate	1
Issaquena	0	Tippah	1
Itawamba	0	Tishomingo	0
Jackson	1	Tunica	3
Jasper	0	Union	1
Jefferson	0	Walthall	0
Jefferson Davis	0	Warren	1
Jones	1	Washington County	52
Kemper	0	Wayne	0
Lafayette	4	Webster	0
Lamar	0	Wilkinson	0
Lauderdale	1	Winston	0
Lawrence	0	Yalobusha	0
Leake	0	Yazoo	7
Lee	1	Grand Total	270

Note: DSU had a total of 332 first-time freshmen in Fall 2011. 62 were from out-of-state.

Source: DSU Office of Institutional Research & Planning

Date: August 2012

Distribution of ACT Composite Scores
Comparison of First-Time Entering Freshmen
Fall 2007 & Fall 2011

ACT Score	Fall 2007		Fall 2011		Percent change
	DSU	Total for All Mississippi 4-year Universities	DSU	Total for All Mississippi 4-year Universities	DSU
36	0	2	0	2	N/A
35	0	10	0	12	N/A
34	0	23	0	55	N/A
33	0	42	2	97	N/A
32	3	72	1	165	-67%
31	0	128	2	209	N/A
30	1	171	3	288	200%
29	6	246	6	403	0%
28	9	275	2	373	-78%
27	10	296	6	461	-40%
26	17	383	11	582	-35%
25	15	436	7	607	-53%
24	16	525	24	685	50%
23	34	540	20	601	-41%
22	30	628	24	731	-20%
21	50	703	27	830	-46%
20	50	802	28	900	-44%
19	56	816	37	856	-34%
18	62	854	51	908	-18%
17	59	690	35	712	-41%
16	39	509	28	624	-28%
15	3	184	7	177	133%
14	1	82	4	91	300%
13	2	56	2	51	0%
12	2	17	1	17	-50%
11	0	7	0	8	N/A
10	0	0	0	0	N/A
9	0	0	0	0	N/A
8	0	0	0	0	N/A
Not Available	0	0	4	119	N/A
Total	465	8,497	332	10,564	
Mean Score	20.3	21.5	20.3	22.2	

Note: IHL does not include students not reporting ACT scores in their report.

Source: DSU Office of Institutional Research & Planning & Mississippi Institutions of Higher Learning

Date: November 2012

ACT Data for Entering Freshmen

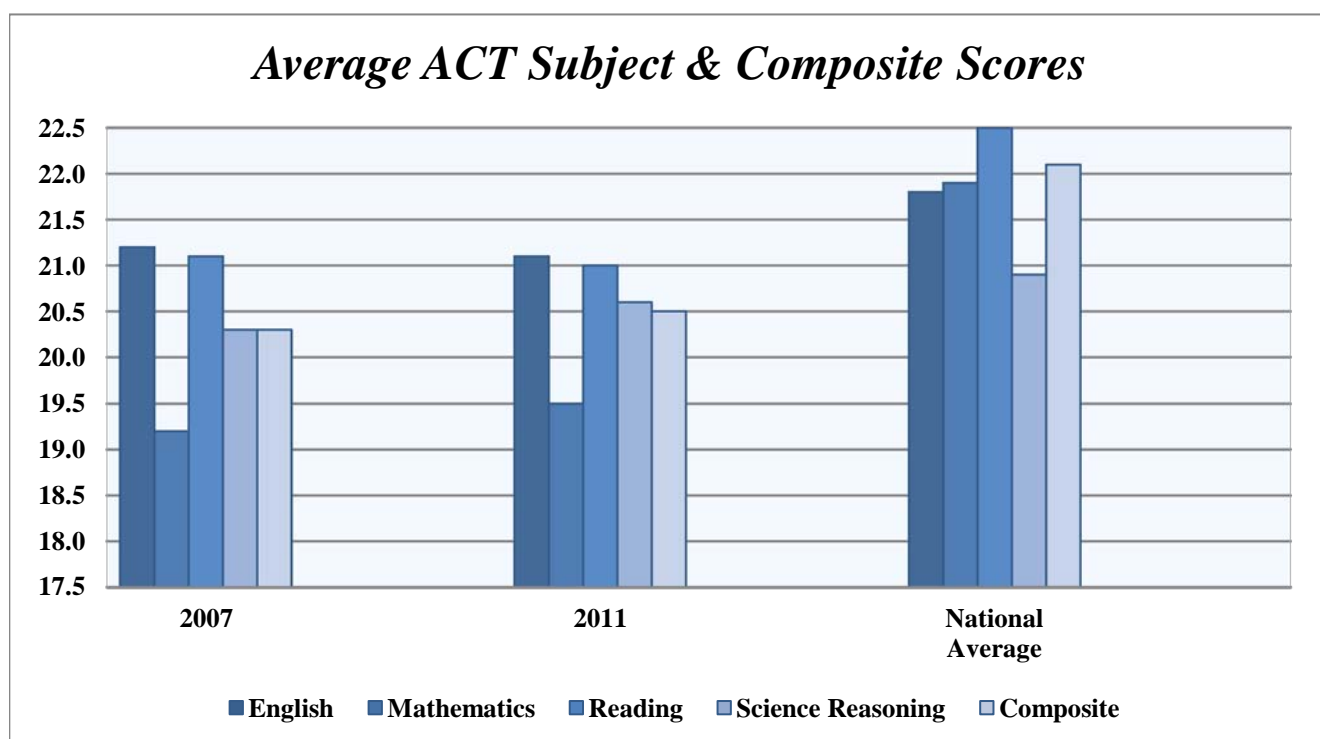
Fall 2011

<i>ACT Scores Average</i>	<i>2007</i>	<i>2011</i>	<i>2011 National Average*</i>
English	21.2	21.1	22.0
Mathematics	19.2	19.5	22.1
Reading	21.1	21.0	22.6
Science Reasoning	20.3	20.6	22.0
Composite	20.3	20.5	22.3

<i>DSU Composite Score Distribution Comparison</i>	<i>2007</i>	<i>2011</i>
Twenty-fifth percentile	18	18
Median	20	20
Seventy-fifth percentile	22	22

**ACT Class Profile Report: Freshmen Class 2011-2012*

Source: DSU Office of Institutional Research & Planning



Source: DSU Office of Institutional Research & Planning

Date: October 2012

Feeder High Schools for ACT Tested Freshmen In-State Freshman Class 2011-2012

<i>High School</i>	<i>Location of School (City)</i>	<i>Enrolled Number</i>
Cleveland High School	Cleveland	32
Greenville Weston HS-GHS	Greenville	13
Desoto Central	Southaven	12
Washington School	Greenville	10
Lee Academy	Clarksdale	9
Deer Creek School	Arcola	8
Hernando High School	Hernando	8
East Side High School	Cleveland	7
Grenada High School	Grenada	7
Riverside High School	Avon	6
South Panola High School	Batesville	6
Southaven High School	Southaven	6
Clinton High School	Clinton	5
Bayou Academy	Cleveland	5
Gentry High School	Indianola	4
Indianola Academy	Indianola	4
Ridgeland High School	Ridgeland	4
Yazoo City High School	Yazoo City	4
Humphreys Academy	Belzoni	3
Yazoo County High School	Yazoo City	3
St. Joseph's High School	Greenville	3
Pillow Academy	Greenwood	3
Horn Lake High School	Horn Lake	3
Terry High School	Terry	3
Mississippi School of Math and Science	Columbus	3
Leland High School	Leland	3
Madison Ridgeland Academy	Madison	3
Delta Academy	Marks	3
Center Hill High School	Olive Branch	3
<i>Other In-State Schools</i>	<i>N/A</i>	<i>102</i>

Source: DSU Office of Institutional Research & Planning

Date: November 2012

Transfer Students by In-State Institution Fall 2011

<i>Transfer Community College</i>	<i>Total Students</i>
Coahoma Community College	85
Copiah-Lincoln Community College	12
East Central Community College	7
East Mississippi Community College - Golden Triangle	3
East Mississippi Community College - Scooba	8
Hinds Community College - Raymond	14
Hinds Community College - Jackson	6
Hinds Community College - Rankin	14
Hinds Community College - Utica	0
Hinds Community College - Vicksburg	1
Holmes Community College - Main Campus	18
Holmes Community College - Grenada	0
Holmes Community College - Ridgeland	0
Itawamba Community College	16
Jones County Junior College	3
Meridian Community College	1
Mississippi Delta Community College	105
Mississippi Gulf Coast Community College - Jackson County	1
Mississippi Gulf Coast Community College - Jefferson Davis	0
Mississippi Gulf Coast Community College - Perkinston	1
Northeast Mississippi Community College	6
Northwest Mississippi Community College	53
Pearl River Community College	1
Southwest Mississippi Community College	0
<i>Grand Total</i>	355

Note: DSU had a total of 516 transfer students in Fall 2011. 161 were from four-year institutions or out-of-state schools.

Source: DSU Office of Institutional Research & Planning

Date: October 2012



Enrollment

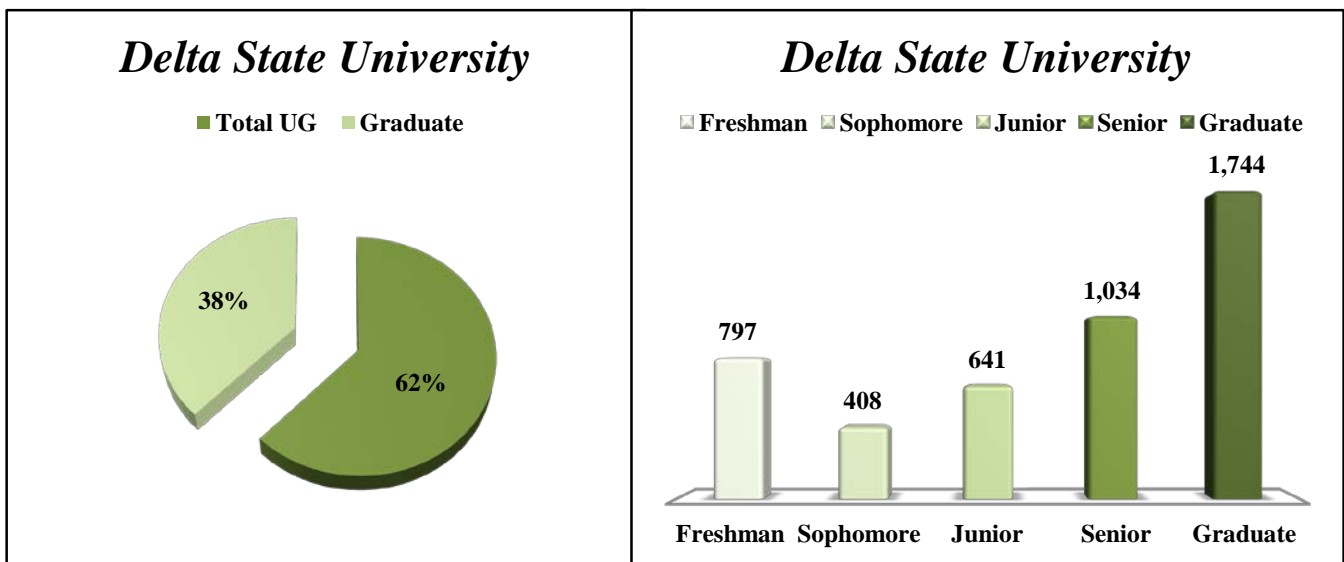
**DELTA STATE
UNIVERSITY** 

Total On & Off Campus Enrollment Mississippi Institutions by Level Fall 2011

<i>Institution</i>	<i>Freshman</i>	<i>Sophomore</i>	<i>Junior</i>	<i>Senior</i>	<i>Total UG</i>	<i>Graduate</i>	<i>Total</i>
<i>Alcorn State University</i>	1,375	574	561	786	3,296	722	4,018
<i>Delta State University</i>¹	797	408	641	1,034	2,880	1,744	4,624
<i>Jackson State University</i>	1,687	1,286	1,542	2,329	6,844	2,059	8,903
<i>MS State University</i>	4,030	3,027	3,709	5,546	16,312	4,112	20,424
<i>MS University for Women</i>	481	291	645	1,061	2,478	183	2,661
<i>MS Valley State University</i>	683	386	374	647	2,090	362	2,452
<i>University of Mississippi*</i>	4,864	2,999	3,525	4,571	15,959	4,871	20,830
<i>University of Southern Mississippi</i>	3,288	1,893	3,113	5,324	13,618	2,986	16,604
<i>Total</i>	17,205	10,864	14,110	21,298	63,477	17,039	80,516

* Includes the University of Mississippi Medical Center

¹ Includes 896 TFA Summer Institute Participants registered as undeclared graduate students



Source: IHL Fall 2010/11 Enrollment Factbook/DSU Office of Institutional Research & Planning

Date: October 2012

Total On & Off Campus Enrollment of Mississippi Institutions by Headcount and Full-Time Equivalent Fall 2011

INSTITUTION	HEADCOUNT				FULL-TIME EQUIVALENT				
	Full-Time	Part-Time	Total	Percent Part-Time	Lower*	Upper*	Graduate**	Total	FTE Percent of Headcount
Alcorn State University	3,155	863	4,018	21.5%	1,802.9	1,246.4	414.1	3,463.4	86.2%
Delta State University¹	3,488	1,136	4,624	24.6%	1,004.0	1,489.3	1,132.7	3,626.0	78.4%
Jackson State University	6,659	2,244	8,903	25.2%	2,813.9	3,337.9	1,220.4	7,372.2	82.8%
MS State University	17,013	3,411	20,424	16.7%	6,743.3	8,281.5	2,803.6	17,828.4	87.3%
MS University for Women	2,019	642	2,661	24.1%	616.1	1,462.2	128.9	2,207.2	82.9%
MS Valley State University	1,842	610	2,452	24.9%	918.5	903.7	220.7	2,042.9	83.3%
University of Mississippi***	17,792	3,038	20,830	14.6%	7,552.4	7,161.7	4,688.6	19,402.7	93.1%
University of Southern MS	12,795	3,809	16,604	22.9%	4,620.2	7,398.0	1,952.1	13,970.3	84.1%
TOTAL	64,763	15,753	80,516	19.6%	26,071.3	31,280.7	12,561.1	69,913.1	86.8%

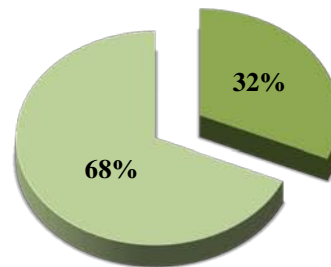
*Undergraduate "FTE" is calculated by dividing total undergraduate semester credit hours by 15.

** Graduate "FTE" is calculated by dividing total graduate semester credit hours by 12.

*** Includes the University of Mississippi Medical Center. Students enrolled in health professional programs are all considered full-time.

¹ Includes 896 TFA Summer Institute Participants (896 full-time and 0 part-time)

Delta State University Percent Full-Time & Part-Time Fall 2011



■ Percent Part-Time
■ Percent Full-Time

Source: IHL Fall 2011 Enrollment/DSU Office of Institutional Research and Planning October 2012

Total On & Off Campus Enrollment of Students by Status 10-Year Trend Fall 2002-2011

<i>Fall Semester</i>	<i>Full-Time</i>		<i>Part-Time</i>		<i>Total</i>	
	<i>Students</i>	<i>Percent</i>	<i>Students</i>	<i>Percent</i>	<i>Students</i>	<i>Percent</i>
2002	2,796	72%	1,065	28%	3,861	100%
2003	2,813	72%	1,089	28%	3,902	100%
2004	3,018	76%	972	24%	3,990	100%
2005	3,114	76%	1,005	24%	4,119	100%
2006	3,122	74%	1,095	26%	4,217	100%
2007	3,025	74%	1,066	26%	4,091	100%
2008	2,905	71%	1,159	29%	4,064	100%
2009	2,781	69%	1,250	31%	4,031	100%
2010 ¹	2,961	68%	1,366	32%	4,327	100%
2011 ²	3,435	74%	1,189	26%	4,624	100%
10-Year Change	639	23%	124	12%	763	20%

¹ Includes 504 TFA Summer Institute Participants (268 full-time and 236 part-time)

² Includes 896 TFA Summer Institute Participants (896 full-time and 0 part-time)

Source: IHL Statistical Report/DSU Office of Institutional Research & Planning

Date: November 2012

Total On & Off Campus Enrollment of Students by Level 10 -Year Trend Fall 2002-2011

<i>Fall Semester</i>	<i>Freshman</i>		<i>Sophomore</i>		<i>Junior</i>		<i>Senior</i>		<i>Graduate</i>		<i>Total</i>	
	#	%	#	%	#	%	#	%	#	%	#	%
2002	1,178	31%	411	11%	551	14%	1,094	28%	627	16%	3,861	100%
2003	1,069	27%	437	11%	562	14%	1,145	29%	689	18%	3,902	100%
2004	887	22%	525	13%	673	17%	1,131	28%	774	19%	3,990	100%
2005	852	21%	548	13%	766	19%	1,149	28%	804	20%	4,119	100%
2006	936	22%	537	13%	792	19%	1,162	28%	790	19%	4,217	100%
2007	1,036	25%	478	12%	656	16%	1,186	29%	735	18%	4,091	100%
2008	860	21%	464	11%	597	15%	1,291	32%	852	21%	4,064	100%
2009	958	24%	439	11%	594	15%	1,124	28%	916	23%	4,031	100%
2010 ¹	880	20%	387	9%	619	14%	1,062	25%	1,379	32%	4,327	100%
2011 ²	797	17.2%	408	8.8%	641	13.9%	1,034	22.4%	1,744	37.7%	4,624	100%
10-Year Change	-381	-32%	-3	-1%	90	16%	-60	-5%	1,117	146%	763	20%

¹ Includes 504 TFA Summer Institute Participants registered as undeclared graduate students

² Includes 896 TFA Summer Institute Participants registered as undeclared graduate students

Source: IHL Statistical Report/DSU Office of Institutional Research & Planning

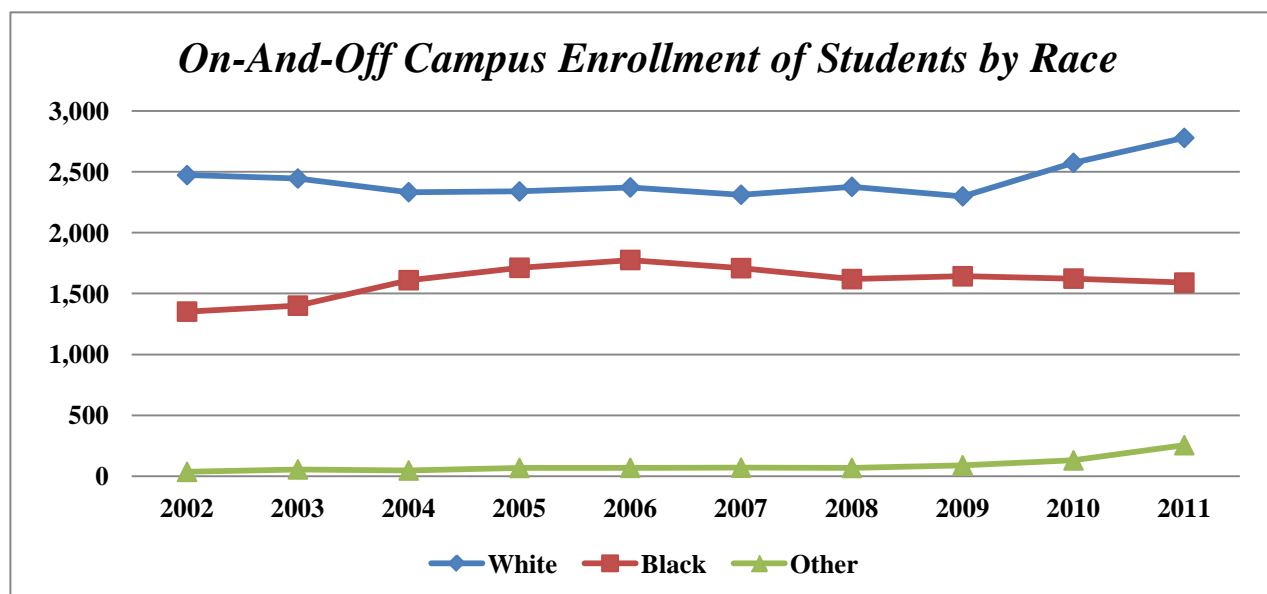
Date: June 2012

Total On & Off Campus Enrollment of Students by Race 10-Year Trend Fall 2002-2011

Fall Semester	White		Black		Other		Total	
	#	%	#	%	#	%	#	%
2002	2,473	64.1%	1,352	35.0%	36	0.9%	3,861	100.0%
2003	2,445	62.7%	1,401	35.9%	56	1.4%	3,902	100.0%
2004	2,333	58.5%	1,610	40.4%	47	1.2%	3,990	100.0%
2005	2,339	56.8%	1,712	41.6%	68	1.7%	4,119	100.0%
2006	2,372	56.2%	1,776	42.1%	69	1.6%	4,217	100.0%
2007	2,312	56.5%	1,709	41.8%	70	1.7%	4,091	100.0%
2008	2,377	58.5%	1,619	39.8%	68	1.7%	4,064	100.0%
2009	2,299	57.0%	1,642	40.7%	90	2.2%	4,031	100.0%
2010	2,574	59.5%	1,623	37.5%	130	3.0%	4,327	100.0%
2011	2,779	60.1%	1,590	34.4%	255	5.5%	4,624	100.0%
10-Year Change	306	40.1%	238	31.2%	219	28.7%	763	19.8%

¹ Includes 504 TFA Summer Institute Participants (409 white, 62 black, and 33 other)

² Includes 896 TFA Summer Institute Participants (664 white, 96 black, and 136 other)

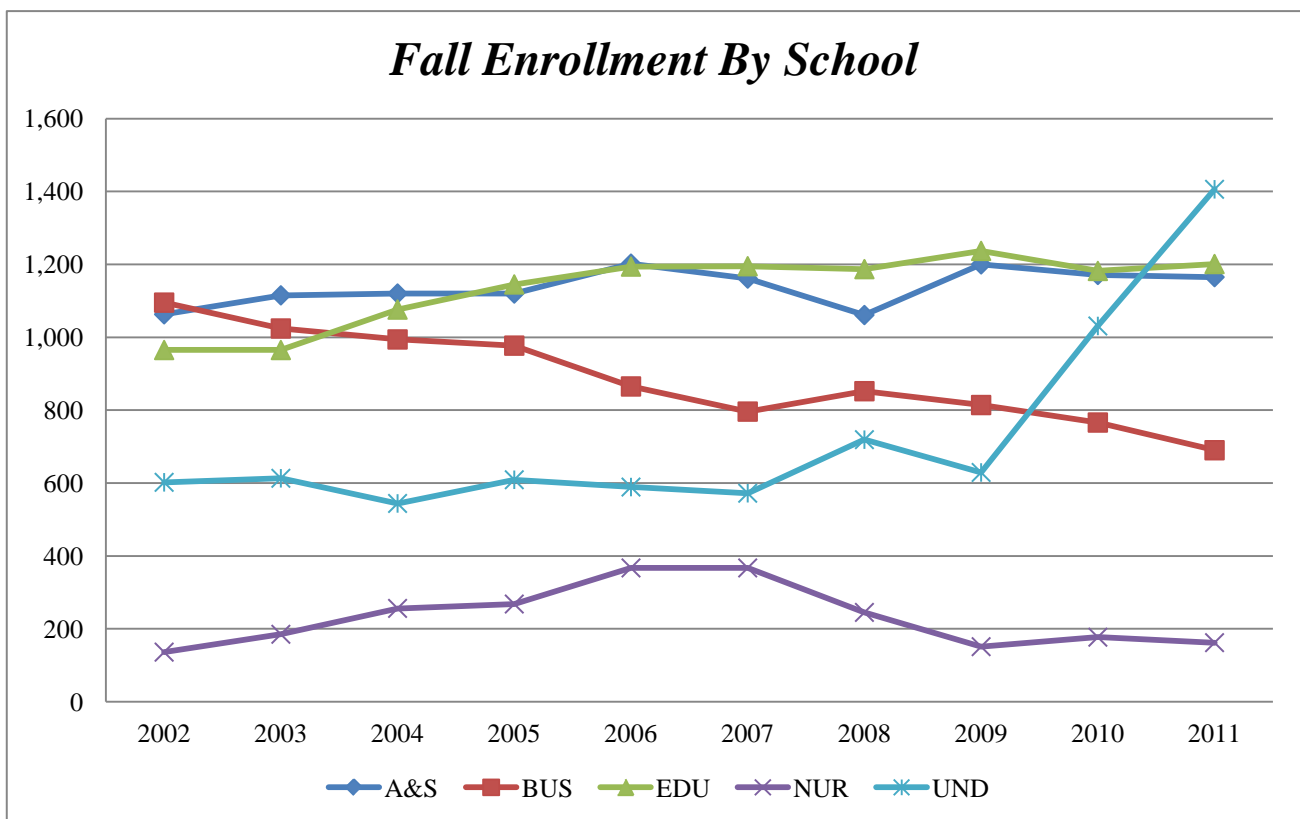


Source: IHL Statistical Report/DSU Office of Institutional Research & Planning
Date: October 2012

On and Off-Campus Enrollment of Students by School

10-Year Trend - Fall 2002-2011

Fall Semester	Arts & Sciences		Business		Education		Nursing		Undeclared		Total	
	#	%	#	%	#	%	#	%	#	%	#	%
2002	1,063	28%	1,095	28%	965	25%	136	4%	602	16%	3,861	100%
2003	1,115	29%	1,024	26%	965	25%	185	5%	613	16%	3,902	100%
2004	1,120	28%	994	25%	1,076	27%	256	6%	544	14%	3,990	100%
2005	1,120	27%	977	24%	1,145	28%	268	7%	609	15%	4,119	100%
2006	1,202	29%	865	21%	1,194	28%	367	9%	589	14%	4,217	100%
2007	1,161	28%	796	19%	1,195	29%	367	9%	572	14%	4,091	100%
2008	1,061	26%	852	21%	1,187	29%	245	6%	719	18%	4,064	100%
2009	1,200	30%	814	20%	1,237	31%	151	4%	629	16%	4,031	100%
2010	1,171	27%	766	18%	1,182	27%	177	4%	1,031	24%	4,327	100%
2011	1,165	25%	690	27%	1,201	26%	162	400%	1,406	30%	4,624	100%
10-Year Change	102	2%	-405	-9%	236	5%	26	2%	804	17%	763	14%



Source: DSU Office of Institutional Research & Planning

Date: June 2012

Total On & Off Campus Enrollment of Students by Race

Fall 2011

	<i>White</i>		<i>Black</i>		<i>Other</i>		<i>Total¹</i>	
	<i>#</i>	<i>%</i>	<i>#</i>	<i>%</i>	<i>#</i>	<i>%</i>	<i>#</i>	<i>%</i>
<i>Male</i>	1,036	22.4%	443	9.6%	105	2.3%	1,584	34.3%
<i>Female</i>	1,743	37.7%	1,147	24.8%	150	3.2%	3,040	65.7%
<i>First-Time Freshmen</i>	206	4.5%	121	2.6%	6	0.1%	333	7.2%
<i>Returning Students</i>	891	19.3%	589	12.7%	49	1.1%	1,529	33.1%
<i>Readmitted Students</i>	142	3.1%	123	2.7%	4	0.1%	269	5.8%
<i>Transfer Students</i>	255	5.5%	253	5.5%	8	0.2%	516	11.2%
<i>Returning Graduate Students</i>	331	7.2%	264	5.7%	32	0.7%	627	13.6%
<i>Transient</i>	5	0.1%	2	0.0%	0	0.0%	7	0.2%
<i>High School Students</i>	92	2.0%	1	0.0%	4	0.1%	97	2.1%
<i>Non-Formula Students (over "21")</i>	22	0.5%	31	0.7%	3	0.1%	56	1.2%
<i>First-Time Graduate Students</i>	777	16.8%	194	4.2%	146	3.2%	1,117	24.2%
<i>Full-time</i>	1,349	29.2%	1,208	26.1%	59	1.3%	2,616	56.6%
<i>Part-time</i>	857	18.5%	382	8.3%	195	4.2%	1,434	31.0%
<i>In-State</i>	1,854	40.1%	1,408	30.4%	92	2.0%	3,354	72.5%
<i>Out-of-State</i>	925	20.0%	182	3.9%	163	3.5%	1,270	27.5%
<i>Pell grant recipient</i>	571	12.3%	910	19.7%	36	0.8%	1,517	32.8%
<i>Non-Pell grant recipient</i>	2,208	47.8%	679	14.7%	219	4.7%	3,106	67.2%
<i>Total</i>	<i>2,779</i>	<i>60.1%</i>	<i>1,590</i>	<i>34.4%</i>	<i>255</i>	<i>5.5%</i>	<i>4,624</i>	<i>100.0%</i>

¹ Includes 896 TFA Summer Institute Participants; see next page for a further breakdown of TFA enrollment

Source: IHL Statistical Report/DSU Office of Institutional Research & Planning

Date: November 2012

TFA Summer Institute Enrollment Summary of Students By Race Fall 2011

	<i>White</i>		<i>Black</i>		<i>Other</i>		<i>TOTAL</i>	
	<i>#</i>	<i>%</i>	<i>#</i>	<i>%</i>	<i>#</i>	<i>%</i>	<i>#</i>	<i>%</i>
<i>Male</i>	183	78.2%	26	14.5%	47	7.3%	256	32.7%
<i>Female</i>	481	82.6%	70	11.2%	89	6.2%	640	67.3%
<i>Full-time</i>	222	82.8%	30	11.2%	16	6.0%	268	53.2%
<i>Part-time</i>	187	79.2%	32	13.6%	17	7.2%	236	46.8%
<i>In-State</i>	0	60.0%	2	40.0%	0	0.0%	5	1.0%
<i>Out-of-State</i>	481	81.4%	70	12.0%	89	6.6%	499	99.0%
<i>Total</i>	664	74%	96	11%	136	15%	896	100%

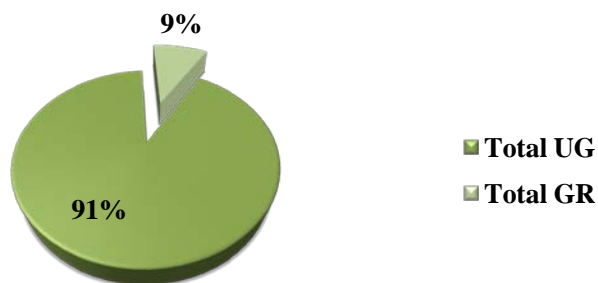
Source: IHL Statistical Report/DSU Office of Institutional Research & Planning

Date: August 2012

Off-Campus/Dual Campus Duplicated Headcount Enrollment by Level 5-Year Trend - Fall 2006-2011

<i>Campus</i>	<i>2006-07</i>	<i>2007-08</i>	<i>2008-09</i>	<i>2009-10</i>	<i>2010-11</i>	<i>2011-12</i>	<i>Percent Change</i>
Clarksdale*							
<i>Freshman</i>	N/A	N/A	N/A	9	1	1	N/A
<i>Sophomore</i>	N/A	N/A	N/A	2	1	0	N/A
<i>Junior</i>	N/A	N/A	N/A	1	3	4	N/A
<i>Senior</i>	N/A	N/A	N/A	34	14	17	N/A
<i>Total Undergraduate</i>	N/A	N/A	N/A	46	19	22	N/A
<i>Total Graduate</i>	N/A	N/A	N/A	1	0	12	N/A
<i>Total</i>	N/A	N/A	N/A	47	19	34	N/A
Greenville**							
<i>Freshman</i>	6	6	9	3	2	4	-33%
<i>Sophomore</i>	9	7	6	2	4	7	-22%
<i>Junior</i>	27	24	18	2	12	19	-30%
<i>Senior</i>	56	63	32	33	29	29	-48%
<i>Total Undergraduate</i>	98	100	65	40	47	59	-40%
<i>Total Graduate</i>	39	35	5	1	15	0	-100%
<i>Total</i>	137	135	70	41	62	59	-57%
Other Locations							
<i>Freshman</i>	68	124	165	160	131	122	79%
<i>Sophomore</i>	11	7	19	12	7	15	36%
<i>Junior</i>	13	12	22	6	31	34	162%
<i>Senior</i>	42	31	61	76	44	64	52%
<i>Total Undergraduate</i>	134	174	267	254	213	235	75%
<i>Total Graduate</i>	87	44	117	55	21	24	-72%
<i>Total</i>	221	218	384	309	234	259	17%
Grand Total	358	353	454	397	315	352	-2%

Off-Campus Enrollment



*Clarksdale was previously reported in "off campus other locations" until Fall 2009

**The Executive Master of Business Administration (EMBA) was renamed Integrated Master of Business Administration (IMBA) and moved from Greenville to (On-Campus) Spring 2008.

Source: DSU Office of Institutional Research & Planning- October 2012

On and Off-Campus Graduate Headcount Enrollment by Academic Program Levels & by Full-Time & Part-Time 5-Year Trend - Fall 2007-2011

	2007	2008	2009	2010 ¹	2011 ²
Master's Program					
<i>Full-time</i>	257	254	263	560	1,140
<i>Part-time</i>	371	454	473	655	435
<i>Total</i>	628	708	736	1,215	1,575
Specialist Program					
<i>Full-time</i>	6	4	16	8	6
<i>Part-time</i>	56	85	100	96	97
<i>Total</i>	62	89	116	104	103
Doctoral Program					
<i>Full-time</i>	5	2	7	3	5
<i>Part-time</i>	40	53	57	57	60
<i>Total</i>	45	55	64	60	65
Total All Programs	735	852	916	1,379	1,743

¹ Includes 504 TFA Summer Institute Participants registered as undeclared graduate students at the master's level

² Includes 896 TFA Summer Institute Participants registered as undeclared graduate students at the master's level

Source: IHL Fall 2011 Enrollment Factbook/DSU Office of Institutional Research & Planning

Date: June 2012

Age Distribution of Students by Full-Time and Part-Time Status Fall 2011

Age	Full-Time						Part-Time						University Totals			
	Undergraduate			Graduate			Undergraduate			Graduate			Men	Women	Total	Percent
	Men	Women	Total	Men	Women	Total	Men	Women	Total	Men	Women	Total	Men	Women	Total	Percent
Under 18	0	0	0	0	0	0	21	30	51	0	0	0	21	30	51	1.1%
18-19	198	292	490	0	0	0	24	32	56	0	0	0	222	324	546	11.8%
20-21	277	466	743	4	20	24	11	18	29	0	0	0	292	504	796	17.2%
22-24	278	370	648	242	586	828	42	67	109	18	56	74	580	1,079	1,659	35.9%
25-29	84	115	199	63	104	167	36	48	84	32	146	178	215	413	628	13.6%
30-34	16	33	49	28	61	89	13	32	45	34	78	112	91	204	295	6.4%
35-39	9	37	46	11	19	30	13	27	40	23	62	85	56	145	201	4.3%
40-49	12	37	49	13	21	34	17	49	66	20	76	96	62	183	245	5.3%
50-64	3	17	20	7	9	16	10	43	53	14	32	46	34	101	135	2.9%
65 & over	0	0	0	0	0	0	10	53	63	0	2	2	10	55	65	1.4%
Unknown	0	0	0	1	2	3	0	0	0	0	0	0	1	2	3	0.1%
Total	877	1,367	2,244	369	822	1,191	197	399	596	141	452	593	1,584	3,040	4,624	100.0%

Source: DSU Office of Institutional Research & Planning

Date: June 2012

Age Distribution of Students by Level & Ethnicity

Fall 2011

Age	White						Black						Other						University Totals			
	Undergraduate			Graduate			Undergraduate			Graduate			Undergraduate			Graduate			Men	Women	Total	Percent
	Men	Women	Total	Men	Women	Total	Men	Women	Total	Men	Women	Total	Men	Women	Total	Men	Women	Total				
Under 18	20	29	49	0	0	0	0	0	0	0	0	0	1	1	2	0	0	0	21	30	51	1.1%
18-19	148	205	353	0	0	0	67	113	180	0	0	0	7	6	13	0	0	0	222	324	546	11.8%
20-21	191	285	476	2	14	16	83	190	273	2	3	5	14	9	23	0	3	3	292	504	796	17.2%
22-24	198	228	426	189	469	658	111	199	310	27	97	124	11	10	21	44	76	120	580	1,079	1,659	35.9%
25-29	70	66	136	61	128	189	45	94	139	28	102	130	5	3	8	6	20	26	215	413	628	13.6%
30-34	15	38	53	35	43	78	23	53	76	11	63	74	3	2	5	4	5	9	91	204	295	6.4%
35-39	14	23	37	19	31	50	8	40	48	10	47	57	0	1	1	5	3	8	56	145	201	4.3%
40-49	13	39	52	25	42	67	15	47	62	6	47	53	1	0	1	2	8	10	62	183	245	5.3%
50-64	7	27	46	21	27	48	5	32	37	0	14	14	1	1	2	0	0	0	34	101	135	2.9%
65 & over	8	47	55	0	1	1	2	5	7	0	0	0	0	1	1	0	1	1	10	55	65	1.4%
Unknown	0	0	0	0	1	1	0	0	0	0	1	0	0	0	0	1	0	1	1	2	3	0.1%
Total	684	987	1,683	352	756	1,108	359	773	1,132	84	374	457	43	34	77	62	116	178	1,584	3,040	4,624	100.0%

¹ Includes 896 TFA Summer Institute Participants registered as graduate students (896 full-time and 0 part-time)

Source: DSU Office of Institutional Research & Planning

Date: June 2012

Active Enrollment by College

Fall 2011

College	Major Area of Study	Summer 2011		Fall 2011		Spring 2012	
		UG	GR	UG	GR	UG	GR
	Art	32	0	109	0	106	0
	Biology	64	0	233	0	194	0
	Chemistry	7	0	38	0	30	0
	Comm. Studies & Theatre Arts	2	0	10	0	11	0
	Community Development	0	13	0	22	0	12
	English	8	0	27	0	25	0
	English Education	3	0	22	0	23	0
	Environmental Science	9	0	23	0	22	0
	Geospatial Information Technology	N/A	N/A	0	14	0	11
	History	6	0	22	0	25	0
	Interdisciplinary Studies	33	0	79	0	73	0
	Journalism	12	0	21	0	19	0
	Mathematics	3	0	15	0	19	0
	Mathematics Education	5	0	20	0	18	0
	Modern Foreign Languages	1	0	4	0	3	0
	Music	2	0	16	0	12	0
	Music Education	5	0	44	0	40	0
	Natural Science	0	0	0	7	0	6
	Music Industry Studies	N/A	N/A	20	0	27	0
	Political Science	8	0	21	0	14	0
	Secondary Education	0	29	0	46	0	34
	Social Justice & Criminology	43	11	99	28	73	24
	Social Science	12	0	19	0	16	0
	Social Science Education	10	0	28	0	29	0
	Social Work	54	0	120	0	124	0
	Speech & Hearing Sciences	17	0	58	0	54	0
Arts & Sciences	Total	336	53	1,048	117	957	87
	Accountancy	42	5	82	8	79	7
	Aviation Management	6	0	22	0	21	0
	Business Administration	0	64	0	93	0	77
	Commercial Aviation	0	30	0	48	0	43
	Computer Information Systems	22	0	78	0	64	0
	Finance	3	0	11	0	11	0
	Flight Operations	13	0	59	0	42	0
	General Business	39	0	130	0	112	0
	Hospitality Services Management	3	0	4	0	3	0
	Insurance and Real Estate	4	0	10	0	6	0
	Management	33	0	106	0	85	0
	Marketing	21	0	39	0	34	0
Business	Total	165	129	502	149	423	127

Active Enrollment by College Fall 2011

College	Major Area of Study	Summer 2011		Fall 2011		Spring 2012	
		UG	GR	UG	GR	UG	GR
	Athletic Training	8	0	52	0	39	0
	Counseling	0	29	0	75	0	66
	Educ. Admin. and Supervision	0	65	0	82	0	87
	Elementary Education	114	146	291	165	264	153
	Family and Consumer Sciences	56	0	104	0	95	0
	HPER	71	11	162	23	179	20
	Professional Studies	0	34	0	65	0	55
	Psychology	34	0	83	0	75	0
	Special Education	0	45	0	63	0	57
	Sport & Human Performance	0	4	0	19	0	24
	Teaching (Alternate Route)	0	28	0	17	0	16
Education	Total	283	362	692	509	652	479
	Nursing	26	15	128	34	85	30
Nursing	Total	26	15	128	34	85	30
	Undeclared	183	87	472	934	389	102
Undeclared*	Total	183	87	472	934	389	102
Total		993	646	2,842	1,743	2,506	825

* Graduate students that are undeclared are primarily provisional admits whose major has not yet been updated in the system.

Source: DSU Office of Institutional Research & Planning

Date: July 2012

Total In-State Students by County

Fall 2011

<i>County of Residence</i>	<i>Total Students</i>
<i>Adams</i>	<i>13</i>
<i>Alcorn</i>	<i>11</i>
<i>Amite</i>	<i>3</i>
<i>Attala</i>	<i>10</i>
<i>Benton</i>	<i>4</i>
<i>Bolivar</i>	<i>891</i>
<i>Calhoun</i>	<i>8</i>
<i>Carroll</i>	<i>17</i>
<i>Chickasaw</i>	<i>0</i>
<i>Choctaw</i>	<i>4</i>
<i>Claiborne</i>	<i>6</i>
<i>Clarke</i>	<i>4</i>
<i>Clay</i>	<i>5</i>
<i>Coahoma</i>	<i>235</i>
<i>Copiah</i>	<i>14</i>
<i>Covington</i>	<i>1</i>
<i>De Soto</i>	<i>171</i>
<i>Forrest</i>	<i>8</i>
<i>Franklin</i>	<i>1</i>
<i>George</i>	<i>2</i>
<i>Greene</i>	<i>4</i>
<i>Grenada</i>	<i>77</i>
<i>Hancock</i>	<i>3</i>
<i>Harrison</i>	<i>11</i>
<i>Hinds</i>	<i>98</i>
<i>Holmes</i>	<i>22</i>
<i>Humphreys</i>	<i>37</i>
<i>Issaquena</i>	<i>3</i>
<i>Itawamba</i>	<i>8</i>
<i>Jackson</i>	<i>5</i>
<i>Jasper</i>	<i>4</i>
<i>Jefferson</i>	<i>2</i>
<i>Jefferson Davis</i>	<i>0</i>
<i>Jones</i>	<i>8</i>
<i>Kemper</i>	<i>1</i>
<i>Lafayette</i>	<i>32</i>
<i>Lamar</i>	<i>4</i>
<i>Lauderdale</i>	<i>16</i>
<i>Lawrence</i>	<i>1</i>
<i>Leake</i>	<i>5</i>
<i>Lee</i>	<i>44</i>

<i>County of Residence</i>	<i>Total Students</i>
<i>Leflore</i>	<i>135</i>
<i>Lincoln</i>	<i>9</i>
<i>Lowndes</i>	<i>11</i>
<i>Madison</i>	<i>90</i>
<i>Marion</i>	<i>3</i>
<i>Marshall</i>	<i>15</i>
<i>Monroe</i>	<i>4</i>
<i>Montgomery</i>	<i>16</i>
<i>Neshoba</i>	<i>8</i>
<i>Newton</i>	<i>2</i>
<i>Noxubee</i>	<i>0</i>
<i>Oktibbeha</i>	<i>6</i>
<i>Panola</i>	<i>70</i>
<i>Pearl River</i>	<i>5</i>
<i>Perry</i>	<i>0</i>
<i>Pike</i>	<i>11</i>
<i>Pontotoc</i>	<i>10</i>
<i>Prentiss</i>	<i>4</i>
<i>Quitman</i>	<i>38</i>
<i>Rankin</i>	<i>108</i>
<i>Scott</i>	<i>6</i>
<i>Sharkey</i>	<i>35</i>
<i>Simpson</i>	<i>12</i>
<i>Smith</i>	<i>4</i>
<i>Stone</i>	<i>3</i>
<i>Sunflower</i>	<i>241</i>
<i>Tallahatchie</i>	<i>61</i>
<i>Tate</i>	<i>22</i>
<i>Tippah</i>	<i>10</i>
<i>Tishomingo</i>	<i>16</i>
<i>Tunica</i>	<i>21</i>
<i>Union</i>	<i>6</i>
<i>Walthall</i>	<i>1</i>
<i>Warren</i>	<i>39</i>
<i>Washington County</i>	<i>453</i>
<i>Wayne</i>	<i>0</i>
<i>Webster</i>	<i>0</i>
<i>Wilkinson</i>	<i>2</i>
<i>Winston</i>	<i>7</i>
<i>Yalobusha</i>	<i>26</i>
<i>Yazoo</i>	<i>51</i>
<i>Grand Total</i>	<i>3,354</i>

Note: DSU had a total of 4,624 students in Fall 2011. 1,270 were from out-of-state.

Source: DSU Office of Institutional Research & Planning 2012

Enrollment of Students by Mississippi Counties

5-Year Trend - Fall 2007-2011

<i>Counties</i>	<i>Fall 2007</i>	<i>Fall 2008</i>	<i>Fall 2009</i>	<i>Fall 2010</i>	<i>Fall 2011</i>	<i>5-Year Change</i>
<i>Adams</i>	7	10	12	6	13	6
<i>Alcorn</i>	9	12	11	15	11	2
<i>Amite</i>	4	3	0	1	3	-1
<i>Attala</i>	11	15	17	12	10	-1
<i>Benton</i>	4	3	1	0	4	0
<i>Bolivar</i>	1,065	1,072	1,038	934	891	-174
<i>Calhoun</i>	8	15	13	5	8	0
<i>Carroll</i>	30	20	26	27	17	-13
<i>Chickasaw</i>	9	12	6	3		-9
<i>Choctaw</i>	6	2	1	1	4	-2
<i>Claiborne</i>	1	1	3	3	6	5
<i>Clarke</i>	6	6	1	5	4	-2
<i>Clay</i>	5	10	8	4	5	0
<i>Coahoma</i>	222	251	262	218	235	13
<i>Copiah</i>	16	12	8	10	14	-2
<i>Covington</i>	3	2	0	1	1	-2
<i>Desoto</i>	155	157	151	177	171	16
<i>Forrest</i>	6	8	8	9	8	2
<i>Franklin</i>	0	0	1	2	1	1
<i>George</i>	5	2	3	2	2	-3
<i>Greene</i>	0	1	1	1	4	4
<i>Grenada</i>	127	115	103	83	77	-50
<i>Hancock</i>	3	2	3	3	3	0
<i>Harrison</i>	17	14	14	15	11	-6
<i>Hinds</i>	51	61	83	87	98	47
<i>Holmes</i>	28	27	28	31	22	-6
<i>Humphreys</i>	51	42	46	34	37	-14

Enrollment of Students by Mississippi Counties

5-Year Trend - Fall 2007-2011

<i>Counties</i>	<i>Fall 2007</i>	<i>Fall 2008</i>	<i>Fall 2009</i>	<i>Fall 2010</i>	<i>Fall 2011</i>	<i>5-Year Change</i>
<i>Issaquena</i>	5	4	6	5	3	-2
<i>Itawamba</i>	6	7	7	3	8	2
<i>Jackson</i>	18	18	15	10	5	-13
<i>Jasper</i>	3	4	5	4	4	1
<i>Jefferson</i>	2	2	3	4	2	0
<i>Jefferson Davis</i>	2	1	1	0	0	-2
<i>Jones</i>	10	6	12	14	8	-2
<i>Kemper</i>	1	1	0	0	1	0
<i>Lafayette</i>	26	29	23	27	32	6
<i>Lamar</i>	4	5	7	7	4	0
<i>Lauderdale</i>	13	11	11	12	16	3
<i>Lawrence</i>	3	3	3	3	1	-2
<i>Leake</i>	4	5	4	3	5	1
<i>Lee</i>	39	38	54	63	44	5
<i>Leflore</i>	136	141	132	134	135	-1
<i>Lincoln</i>	13	12	13	9	9	-4
<i>Lowndes</i>	10	13	17	8	11	1
<i>Madison</i>	65	62	62	75	90	25
<i>Marion</i>	4	6	2	4	3	-1
<i>Marshall</i>	5	7	4	8	15	10
<i>Monroe</i>	7	10	6	10	4	-3
<i>Montgomery</i>	21	17	16	16	16	-5
<i>Neshoba</i>	0	2	1	3	8	8
<i>Newton</i>	1	0	0	1	2	1
<i>Noxubee</i>	0	1	0	0	0	0
<i>Oktibbeha</i>	13	18	17	9	6	-7
<i>Panola</i>	85	77	78	71	70	-15
<i>Pearl River</i>	6	6	7	6	5	-1

Enrollment of Students by Mississippi Counties 5-Year Trend - Fall 2007-2011

<i>Counties</i>	<i>Fall 2007</i>	<i>Fall 2008</i>	<i>Fall 2009</i>	<i>Fall 2010</i>	<i>Fall 2011</i>	<i>5-Year Change</i>
<i>Perry</i>	1	2	2	0	0	-1
<i>Pike</i>	7	6	8	10	11	4
<i>Pontotoc</i>	6	8	8	4	10	4
<i>Prentiss</i>	6	5	6	7	4	-2
<i>Quitman</i>	28	33	30	43	38	10
<i>Rankin</i>	57	80	100	113	108	51
<i>Scott</i>	4	5	11	7	6	2
<i>Sharkey</i>	31	33	36	38	35	4
<i>Simpson</i>	7	4	4	8	12	5
<i>Smith</i>	1	1	1	3	4	3
<i>Stone</i>	4	2	1	1	3	-1
<i>Sunflower</i>	274	260	257	242	241	-33
<i>Tallahatchie</i>	93	91	79	67	61	-32
<i>Tate</i>	43	38	43	31	22	-21
<i>Tippah</i>	2	3	4	8	10	8
<i>Tishomingo</i>	3	28	28	10	16	13
<i>Tunica</i>	20	19	22	15	21	1
<i>Union</i>	6	5	5	8	6	0
<i>Walthall</i>	0	1	3	1	1	1
<i>Warren</i>	29	35	40	47	39	10
<i>Washington</i>	531	577	498	447	453	-78
<i>Wayne</i>	1	3	2	3	0	-1
<i>Webster</i>	8	7	4	2	0	-8
<i>Wilkinson</i>	0	1	1	2	2	2
<i>Winston</i>	5	5	7	7	7	2
<i>Yalobusha</i>	32	31	28	35	26	-6
<i>Yazoo</i>	45	44	39	48	51	6
<i>Totals</i>	3,595	3,708	3,621	3,405	3,354	-241

Source: DSU Office of Institutional Research & Planning
Date: August 2012



Credit Hour Production

**DELTA STATE
UNIVERSITY** 

Credit Hour Production Academic Year 2011-2012

College	Course	Summer 2011		Fall 2011		Spring 2012	
		UG	GR	UG	GR	UG	GR
	Arts & Sciences						
	AMU	5	0	122	0	114	0
	ANT	0	0	84	0	0	0
	ART	144	3	1,578	34	1,671	36
	BIO	238	0	2,214	20	1,968	23
	BIS	99	0	177	0	168	0
	CHE	122	0	860	15	732	17
	COD	0	42	0	78	0	42
	COM	39	0	510	0	498	0
	CRJ	33	12	534	108	405	108
	DMI	42	0	360	0	374	0
	ENG	426	30	3,243	65	3,025	60
	FRE	0	0	168	0	114	0
	GEO	403	9	525	6	597	3
	GER	0	0	0	0	0	0
	GIS	24	7	134	132	99	96
	GST	0	0	319	0	0	0
	HIS	300	0	1,434	39	1,227	24
	JOU	0	0	150	0	137	0
	LIB	81	0	99	0	102	0
	MAT	114	78	1,728	0	1,506	0
	MUS	147	0	937	4	601	2
	MSC	0	0	31	0	8	0
	PHI	0	0	273	0	222	0
	PHY	243	0	569	0	624	3
	PLS	24	0	82	0	39	0
	PSC	177	12	480	36	485	18
	REM	3	0	6	0	0	30
	RRS	0	30	0	0	0	0
	SHS	0	0	663	0	483	0
	SOC	108	78	891	72	717	75
	SPA	78	0	258	0	246	0
	SRT	0	0	0	0	0	0
	SSC	0	0	146	51	150	51
	SWO	366	0	1,299	0	1,521	0
	THE	0	0	100	0	79	0
	Arts & Sciences Total	3,216	301	19,974	660	17,912	588

Credit Hour Production

Academic Year 2011-2012

<i>College</i>	<i>Course</i>	<i>Summer 2011</i>		<i>Fall 2011</i>		<i>Spring 2012</i>	
Business							
	<i>ACC</i>	191	36	642	69	645	138
	<i>CAV</i>	11	183	563	258	388	261
	<i>CIS</i>	291	53	1,257	77	984	29
	<i>ECO</i>	99	0	495	69	454	51
	<i>FIN</i>	33	21	273	45	198	150
	<i>GBA</i>	57	0	564	0	483	0
	<i>GMT</i>	0	0	0	0	0	0
	<i>HSM</i>	0	0	6	0	6	0
	<i>IRR</i>	0	0	123	0	93	0
	<i>MBA</i>	0	90	0	186	0	105
	<i>MGT</i>	306	306	1,173	141	1,051	189
	<i>MKT</i>	147	27	493	171	376	96
	<i>Business Total</i>	1,135	716	5,589	1,016	4,678	1,019
Education							
	<i>AED</i>	0	285	0	309	0	273
	<i>CAD</i>	0	0	0	51	0	0
	<i>CED</i>	87	249	135	522	93	465
	<i>CEL</i>	126	684	1,593	576	1,611	618
	<i>CML</i>	120	0	69	24	72	45
	<i>CRD</i>	129	186	342	3	255	180
	<i>CSD</i>	0	24	0	21	0	0
	<i>CSP</i>	267	321	504	312	573	252
	<i>CUR (greater than 700)</i>	0	156	0	123	0	129
	<i>CUR (less than 700)*</i>	0	354	526	8,247	458	144
	<i>EDL</i>	0	147	0	80	0	112
	<i>ELR</i>	0	297	0	360	0	228
	<i>EPY</i>	30	174	243	183	273	111
	<i>FCS</i>	410	0	1,326	0	1,518	18
	<i>HEB</i>					18	0
	<i>HSE</i>	156	12	683	30	778	27
	<i>PER</i>	351	36	1,927	249	1,866	264
	<i>PSY</i>	222	0	1,317	0	1,188	0
	<i>SUP</i>	0	0	0	0	0	156
	<i>Education Total</i>	1,898	2,925	8,665	11,090	8,703	3,022
Nursing							
	<i>NUR</i>	359	100	1,444	326	924	483
	<i>Nursing Total</i>	359	100	1,444	326	924	483
Total Hours		6,608	4,042	35,672	13,092	32,217	5,112
Grand Total		10,650		48,764		37,329	

On/Off Campus Student Credit Hour Summary by Discipline Fall 2011

<i>Level</i>	<i>Undergraduate</i>		<i>Graduate</i>		<i>Total CHP</i>	<i>Total Percent by College</i>	<i>Total Percent Of University</i>
	<i>CHP</i>	<i>Percent</i>	<i>CHP</i>	<i>Percent</i>			
University Total	35,672	80%	13,092	20%	48,764	100.0%	100.0%
Arts & Sciences	19,974	97%	660	3%	20,634	100.0%	42.3%
AMU	122	100.0%	0	0%	122	0.6%	0.3%
ANT	84	100.0%	0	0%	84	0.4%	0.2%
ART	1,578	97.9%	34	2%	1,612	7.8%	3.3%
BIO	2,214	99.1%	20	1%	2,234	10.8%	4.6%
BIS	177	100.0%	0	0%	177	0.9%	0.4%
CHE	860	98.3%	15	2%	875	4.2%	1.8%
COD	0	0.0%	78	100%	78	0.4%	0.2%
COM	510	100.0%	0	0%	510	2.5%	1.0%
CRJ	534	83.2%	108	17%	642	3.1%	1.3%
DMI	360	100.0%	0	0%	360	1.7%	0.7%
ENG	3,243	98.0%	65	2%	3,308	16.0%	6.8%
FRE	168	100.0%	0	0%	168	0.8%	0.3%
GEO	525	98.9%	6	1%	531	2.6%	1.1%
GER	0	N/A	0	N/A	0	0.0%	0.0%
GIS	134	50.4%	132	50%	266	1.3%	0.5%
GST	319	100.0%	0	0%	319	1.5%	0.7%
HIS	1,434	97.4%	39	3%	1,473	7.1%	3.0%
JOU	150	100.0%	0	0%	150	0.7%	0.3%
LIB	99	100.0%	0	0%	99	0.5%	0.2%
MAT	1,728	100.0%	0	0%	1,728	8.4%	3.5%
MUS	937	99.6%	4	0%	941	4.6%	1.9%
MSC	31	100.0%	0	0%	31	0.2%	0.1%
PHI	273	100.0%	0	0%	273	1.3%	0.6%
PHY	569	100.0%	0	0%	569	2.8%	1.2%
PLS	82	100.0%	0	0%	82	0.4%	0.2%
PSC	480	93.0%	36	7%	516	2.5%	1.1%
REM	6	100.0%	0	0%	6	0.0%	0.0%
RRS	0	N/A	0	N/A	0	0.0%	0.0%
SHS	663	100.0%	0	0%	663	3.2%	1.4%
SOC	891	92.5%	72	7%	963	4.7%	2.0%
SPA	258	100.0%	0	0%	258	1.3%	0.5%
SRT	0	N/A	0	N/A	0	0.0%	0.0%
SSC	146	74.1%	51	26%	197	1.0%	0.4%
SWO	1,299	100.0%	0	0%	1,299	6.3%	2.7%
THE	100	100.0%	0	0%	100	0.5%	0.2%

On/Off Campus Student Credit Hour Summary by Discipline Fall 2011

Level	Undergraduate		Graduate		Total CHP	Total Percent by College	Total Percent Of University
	CHP	Percent	CHP	Percent			
University Total	35,672	80%	13,092	20%	48,764	100.0%	100.0%
Business	5,589	84.6%	1,016	15%	6,605	100.0%	13.5%
ACC	642	90.3%	69	10%	711	3.4%	1.5%
CAV	563	68.6%	258	31%	821	4.0%	1.7%
CIS	1,257	94.2%	77	6%	1,334	6.5%	2.7%
ECO	495	87.8%	69	12%	564	2.7%	1.2%
FIN	273	85.8%	45	14%	318	1.5%	0.7%
GBA	564	100.0%	0	0%	564	2.7%	1.2%
GMT	0	N/A	0	N/A	0	0.0%	0.0%
HSM	6	100.0%	0	0%	6	0.0%	0.0%
IRR	123	100.0%	0	0%	123	0.6%	0.3%
MBA	0	0.0%	186	100%	186	0.9%	0.4%
MGT	1,173	89.3%	141	11%	1,314	6.4%	2.7%
MKT	493	74.2%	171	26%	664	3.2%	1.4%
Education	8,665	43.9%	11,090	56%	19,755	100.0%	40.5%
AED	0	0.0%	309	100%	309	1.5%	0.6%
CAD	0	0.0%	51	100%	51	0.2%	0.1%
CED	135	20.5%	522	79%	657	3.2%	1.3%
CEL	1,593	73.4%	576	27%	2,169	10.5%	4.4%
CML	69	74.2%	24	26%	93	0.5%	0.2%
CRD	342	99.1%	3	1%	345	1.7%	0.7%
CSD	0	0.0%	21	100%	21	0.1%	0.0%
CSP	504	61.8%	312	38%	816	4.0%	1.7%
CUR (greater than 700)	0	0.0%	123	100%	123	0.6%	0.3%
CUR (less than 700)	526	6.0%	8,247	94%	8,773	42.5%	18.0%
EDL	0	0.0%	80	100%	80	0.4%	0.2%
ELR	0	0.0%	360	100%	360	1.7%	0.7%
EPY	243	57.0%	183	43%	426	2.1%	0.9%
FCS	1,326	100.0%	0	0%	1,326	6.4%	2.7%
HEB	0	N/A	0	N/A	0	0.0%	0.0%
HSE	683	95.8%	30	4%	713	3.5%	1.5%
PER	1,927	88.6%	249	11%	2,176	10.5%	4.5%
PSY	1,317	100.0%	0	0%	1,317	6.4%	2.7%
SUP	0	N/A	0	N/A	0	0.0%	0.0%
Nursing	1,444	81.6%	326	18%	1,770	100.0%	3.6%
NUR	1,444	81.6%	326	18%	1,770	100.0%	3.6%

Source: Office of Institutional Research and Planning

Date: August 2012



Degrees

**DELTA STATE
UNIVERSITY** 

(The text and logo are reflected below them.)

Academic Program Inventory/ Accrediting Bodies 2011 - 2012

<i>CIP</i>	<i>Programs</i>	<i>Degrees</i>	<i>Accrediting Body</i>
52.03	Accountancy	MPA	Association of Collegiate Business Schools and Programs
52.03	Accountancy	BBA	Association of Collegiate Business Schools and Programs
50.01	Art	BA	National Association of Schools of Art and Design
50.01	Art	BFA	National Association of Schools of Art and Design
51.091	Athletic Training	BS	Commission on Accreditation of Athletic Training Education
49.01	Aviation Management	BCA	
26.01	Biology	BS	National Council for Accreditation of Teacher Education
52.02	Business Administration	MBA	Association of Collegiate Business Schools and Programs
40.05	Chemistry	BS	The American Chemical Society
49.01	Commercial Aviation	MCA	Federal Aviation Administration
24.01	Communication Studies and Theatre Arts	BA	
44.02	Community Development	MS	
52.12	Computer Information Systems	BBA	Association of Collegiate Business Schools and Programs
13.11	Counseling	MED	National Council for Accreditation of Teacher Education / Council for Accreditation of Counseling and Related Educational Programs
13.04	Educational Administration & Supervision	EDS	National Council for Accreditation of Teacher Education
13.04	Educational Administration & Supervision	MED	National Council for Accreditation of Teacher Education
13.12	Elementary Education	EDS	National Council for Accreditation of Teacher Education
13.12	Elementary Education	MED	National Council for Accreditation of Teacher Education
13.12	Elementary Education	BSE	National Council for Accreditation of Teacher Education
23.01	English	BA	
13.131	English Education	BSE	National Council for Accreditation of Teacher Education

Academic Program Inventory/ Accrediting Bodies 2011 - 2012

<i>CIP</i>	<i>Programs</i>	<i>Degrees</i>	<i>Accrediting Body</i>
30.01	<i>Environmental Sciences</i>	<i>BS</i>	
19.01	<i>Family and Consumer Science</i>	<i>BS</i>	<i>American Association of Family and Consumer Sciences / Commission on Accreditation for Dietetics Education</i>
52.08	<i>Finance</i>	<i>BBA</i>	<i>Association of Collegiate Business Schools and Programs</i>
52.01	<i>General Business</i>	<i>BBA</i>	<i>Association of Collegiate Business Schools and Programs</i>
42	<i>Geospatial Information Technology</i>	<i>MAS...</i>	
13.131	<i>Health, Physical Education & Recreation</i>	<i>BS</i>	<i>Commission on Accreditation of Athletic Training Education</i>
13.131	<i>Health, Physical Education & Recreation</i>	<i>BSE</i>	<i>National Council for Accreditation of Teacher Education/National Association for Sport and Physical Education</i>
13.131	<i>Health, Physical Education & Recreation</i>	<i>MED</i>	<i>National Council for Accreditation of Teacher Education</i>
54.01	<i>History</i>	<i>BA</i>	
52.09	<i>Hospitality Services Management</i>	<i>BBA</i>	<i>Association of Collegiate Business Schools and Programs</i>
52.17	<i>Insurance and Real Estate</i>	<i>BBA</i>	<i>Association of Collegiate Business Schools and Programs</i>
31	<i>Interdisciplinary Studies</i>	<i>BSIS</i>	
09.0401	<i>Journalism</i>	<i>BA</i>	
52.02	<i>Management</i>	<i>BBA</i>	<i>Association of Collegiate Business Schools and Programs</i>
52.14	<i>Marketing</i>	<i>BBA</i>	<i>Association of Collegiate Business Schools and Programs</i>
27.01	<i>Mathematics</i>	<i>BS</i>	
13.131	<i>Mathematics Education</i>	<i>BSE</i>	<i>National Council for Accreditation of Teacher Education</i>
16.01	<i>Modern Foreign Languages</i>	<i>BA</i>	
50.09	<i>Music</i>	<i>BA</i>	<i>National Association of Schools of Music</i>
50.09	<i>Music</i>	<i>BM</i>	<i>National Association of Schools of Music</i>
13.131	<i>Music Education</i>	<i>BME</i>	<i>National Association of Schools of Music / National Council for Accreditation of Teacher Education</i>
50.11	<i>Music Industry Studies</i>	<i>BSMIS.</i>	

Academic Program Inventory/ Accrediting Bodies 2011 - 2012

<i>CIP</i>	<i>Programs</i>	<i>Degrees</i>	<i>Accrediting Body</i>
30.01	Natural Science	MSNS	National Council for Accreditation of Teacher Education
51.38	Nursing	BSN	Commission on Collegiate Nursing Education
51.39	Nursing	MSN	Commission on Collegiate Nursing Education
45.1	Political Science	BA	
13.01	Professional Studies	EDD	National Council for Accreditation of Teacher Education
42.01	Psychology	BA	
13.121	Secondary Education	MED	National Council for Accreditation of Teacher Education
43.01	Social Justice & Criminology	BSJC	
43.01	Social Justice & Criminology	MSJC	
45.01	Social Science	BS	
13.132	Social Science Education	BSE	National Council for Accreditation of Teacher Education
44.07	Social Work	BSW	Council on Social Work Education
13.1	Special Education	MED	National Council for Accreditation of Teacher Education
51.02	Speech & Hearing Sciences	BS	
13.131	Sport & Human Performance	MS	
13.121	Teaching (Alternate Route)	MAT	National Council for Accreditation of Teacher Education

Source: IHL Academic Program Inventory

Date: August 2012

Degrees Awarded by Degree Type

5-Year Trend

Degrees*	AY 2008		AY 2009		AY 2010		AY 2011		AY 2012		5-YR Change	
	#	%	#	%	#	%	#	%	#	%	#	%
Bachelor's	635	74.5%	599	67.6%	519	67.2%	559	62.6%	503	64.5%	-132	-26.2%
BA	59	9.3%	49	8.2%	57	11.0%	45	8.1%	41	8.2%	-18	-43.9%
BBA	161	25.4%	134	22.4%	126	24.3%	124	22.2%	93	18.5%	-68	-73.1%
BCA	13	2.0%	20	3.3%	15	2.9%	26	4.7%	18	3.6%	5	27.8%
BFA	26	4.1%	25	4.2%	22	4.2%	18	3.2%	19	3.8%	-7	-36.8%
BM	0	0.0%	3	0.5%	1	0.2%	1	0.2%	0	0.0%	0	NA
BME	5	0.8%	7	1.2%	6	1.2%	9	1.6%	8	1.6%	3	37.5%
BS	166	26.1%	167	27.9%	138	26.6%	148	26.5%	107	21.3%	-59	-55.1%
BSE	77	12.1%	62	10.4%	70	13.5%	75	13.4%	78	15.5%	1	1.3%
BSGS**	5	0.8%	1	0.2%	1	0.2%	0	0.0%	0	0.0%	-5	NA
BSIS	27	4.3%	18	3.0%	20	3.9%	24	4.3%	28	5.6%	1	3.6%
BSJC	19	3.0%	29	4.8%	22	4.2%	17	3.0%	19	3.8%	0	0.0%
BSN	52	8.2%	54	9.0%	19	3.7%	42	7.5%	54	10.7%	2	3.7%
BSW	25	3.9%	30	5.0%	22	4.2%	30	5.4%	38	7.6%	13	34.2%
Master's	191	22.4%	262	29.6%	231	29.9%	291	32.6%	241	30.9%	50	20.7%
MAT	7	3.7%	9	3.4%	12	5.2%	7	2.4%	15	4.5%	8	53.3%
MBA	28	14.7%	62	23.7%	43	18.6%	62	21.3%	37	11.2%	9	24.3%
MCA	11	5.8%	15	5.7%	11	4.8%	23	7.9%	20	6.0%	9	45.0%
MED	91	47.6%	121	46.2%	133	57.6%	148	50.9%	135	43.8%	44	32.6%
MPA	5	2.6%	10	3.8%	10	4.3%	9	3.1%	6	2.4%	1	16.7%
MS	9	4.7%	8	3.1%	5	2.2%	8	2.7%	9	2.7%	0	0.0%
MSJC	9	4.7%	2	0.8%	8	3.5%	4	1.4%	4	1.2%	-5	-125.0%
MSN	29	15.2%	33	12.6%	9	3.9%	30	10.3%	13	3.9%	-16	-123.1%
MSNS	2	1.0%	2	0.8%	0	0.0%	0	0.0%	2	0.6%	0	0.0%
Specialist's	21	2.5%	20	2.3%	20	2.6%	42	4.7%	34	4.4%	13	38%
EDS	21	100.0%	20	100.0%	20	100.0%	42	100.0%	34	100.0%	13	38.2%
Doctoral	5	0.6%	5	0.6%	2	0.3%	1	0.1%	2	0.3%	-3	-150%
EDD	5	100.0%	5	100.0%	2	100.0%	1	100.0%	2	100.0%	-3	-150.0%
Total	852	100%	886	100%	772	100%	893	100%	780	100%	-72	-9%

*Total degrees awarded in December and May

** BSGS is no longer an active degree

Source: Office of the Registrar & Office of Institutional Research and Planning

Date: August 2012

Degrees Awarded

December 2011 & May 2012 Combined

<i>Major</i>	<i>Degree</i>	<i>Total</i>
<i>Accountancy</i>	<i>BBA</i>	<i>21</i>
	<i>MPA</i>	<i>6</i>
<i>Art</i>	<i>BA</i>	<i>3</i>
	<i>BFA</i>	<i>19</i>
<i>Athletic Training</i>	<i>BS</i>	<i>6</i>
<i>Aviation Management</i>	<i>BCA</i>	<i>7</i>
<i>Biology</i>	<i>BS</i>	<i>19</i>
<i>Business Administration</i>	<i>MBA</i>	<i>37</i>
<i>Chemistry</i>	<i>BS</i>	<i>10</i>
<i>Commercial Aviation</i>	<i>MCA</i>	<i>20</i>
<i>Communication Studies and Theatre Arts</i>	<i>BA</i>	<i>1</i>
<i>Community Development</i>	<i>MS</i>	<i>4</i>
<i>Computer Information Systems</i>	<i>BBA</i>	<i>14</i>
<i>Counseling</i>	<i>MED</i>	<i>12</i>
<i>Educational Administration & Supervision</i>	<i>EDS</i>	<i>21</i>
	<i>MED</i>	<i>12</i>
<i>Elementary Education</i>	<i>BSE</i>	<i>56</i>
	<i>EDS</i>	<i>13</i>
	<i>MED</i>	<i>73</i>
<i>English</i>	<i>BA</i>	<i>4</i>
<i>English Education</i>	<i>BSE</i>	<i>4</i>
<i>Environmental Science</i>	<i>BS</i>	<i>5</i>
<i>Family & Consumer Sciences</i>	<i>BS</i>	<i>22</i>
<i>Finance</i>	<i>BBA</i>	<i>2</i>
<i>Flight Operations</i>	<i>BCA</i>	<i>11</i>
<i>General Business Administration</i>	<i>BBA</i>	<i>20</i>
<i>Health PE & Recreation</i>	<i>BS</i>	<i>27</i>
	<i>BSE</i>	<i>7</i>
	<i>BSGS</i>	<i>0</i>
	<i>MED</i>	<i>6</i>
<i>History</i>	<i>BA</i>	<i>4</i>
<i>Hospitality Services Management</i>	<i>BBA</i>	<i>0</i>
<i>Insurance & Real Estate</i>	<i>BBA</i>	<i>2</i>
<i>Interdisciplinary Studies</i>	<i>BSIS</i>	<i>28</i>
<i>Journalism</i>	<i>BA</i>	<i>9</i>
<i>Management</i>	<i>BBA</i>	<i>19</i>
<i>Marketing</i>	<i>BBA</i>	<i>15</i>
<i>Mathematics</i>	<i>BS</i>	<i>1</i>
<i>Mathematics Education</i>	<i>BSE</i>	<i>3</i>
<i>Modern Foreign Language</i>	<i>BA</i>	<i>0</i>

Degrees Awarded

December 2011 & May 2012 Combined

Major	Degree	Total
<i>Music</i>	<i>BA</i>	<i>1</i>
	<i>BM</i>	<i>0</i>
<i>Music Education</i>	<i>BME</i>	<i>8</i>
<i>Natural Sciences</i>	<i>MSNS</i>	<i>2</i>
<i>Nursing</i>	<i>BSN</i>	<i>54</i>
	<i>MSN</i>	<i>13</i>
<i>Political Science</i>	<i>BA</i>	<i>2</i>
<i>Professional Studies</i>	<i>EDD</i>	<i>2</i>
<i>Psychology</i>	<i>BA</i>	<i>17</i>
<i>Secondary Education</i>	<i>MED</i>	<i>12</i>
<i>English</i>	<i>MED</i>	<i>5</i>
<i>Fine Arts</i>	<i>MED</i>	<i>1</i>
<i>History</i>	<i>MED</i>	<i>2</i>
<i>Social Science</i>	<i>MED</i>	<i>3</i>
<i>Social Justice and Criminology</i>	<i>BSJC</i>	<i>19</i>
	<i>MSJC</i>	<i>4</i>
<i>Social Science</i>	<i>BS</i>	<i>2</i>
<i>Social Science Education</i>	<i>BSE</i>	<i>8</i>
<i>Social Work</i>	<i>BSW</i>	<i>38</i>
<i>Special Education</i>	<i>MED</i>	<i>20</i>
<i>Speech & Hearing Sciences</i>	<i>BS</i>	<i>15</i>
<i>Sport & Human Performance</i>	<i>MS</i>	<i>5</i>
<i>Teaching</i>	<i>MAT</i>	<i>15</i>
Grand Total		780

Source: Office of the Registrar & Office of Institutional Research and Planning

Date: June 2012

Graduates by Race, Gender and College Fall 2011 and Spring 2012

	<i>Bachelor's</i>		<i>Master's</i>		<i>Educational Specialists</i>		<i>Doctoral</i>		<i>Total</i>	
	#	%	#	%	#	%	#	%	#	%
<i>Race/Ethnicity</i>										
<i>White</i>	312	62.03%	162	67.22%	7	20.59%	1	50.00%	482	61.79%
<i>Black</i>	173	34.39%	65	26.97%	26	76.47%	1	50.00%	265	33.97%
<i>Other</i>	18	3.58%	14	5.81%	1	2.94%	0	0.00%	33	4.23%
<i>Gender</i>										
<i>Male</i>	175	34.79%	65	26.97%	4	11.76%	1	50.00%	245	31.41%
<i>Female</i>	328	65.21%	176	73.03%	30	88.24%	1	50.00%	535	68.59%
<i>College</i>										
<i>Arts & Sciences</i>	203	40.36%	15	6.22%	0	0.00%	0	0.00%	218	27.95%
<i>Business</i>	111	22.07%	63	26.14%	0	0.00%	0	0.00%	174	22.31%
<i>Education</i>	135	26.84%	150	62.24%	34	100.00%	2	100.00%	321	41.15%
<i>Nursing</i>	54	10.74%	13	5.39%	0	0.00%	0	0.00%	67	8.59%
<i>Total</i>	503	64.49%	241	30.90%	34	4.36%	2	0.26%	780	100.00%

Source: DSU Office of Institutional Research & Planning
Date: November 2012

Graduates with Academic Honors 2011-2012

	<i>Honors</i>			<i>Total Honors</i>	<i>All Graduates</i>	<i>% Honors</i>
	<i>Cum Laude</i>	<i>Magna Cum Laude</i>	<i>Summa Cum Laude</i>			
<i>Arts & Sciences</i>						
Bach. of Arts	3	1	4	8	24	33.33%
Bach. of Fine Arts	1	1	0	2	19	10.53%
Bach. of Music	0	0	0	0	0	N/A
Bach. of Music Education	0	3	0	3	8	37.50%
Bach. of Science	4	9	2	15	52	28.85%
Bach. of Science in Education	2	1	0	3	15	20.00%
Bach. of Science in Interdisciplin. Stud.	1	2	1	4	28	14.29%
Bach. of Social Justice & Criminology	0	1	0	1	19	5.26%
Bach. of Social Work	3	1	0	4	38	10.53%
<i>Business</i>						
Bach. of Business Administration	7	5	1	13	93	13.98%
Bach. of Commercial Aviation	1	3	1	5	18	27.78%
<i>Education</i>						
Bach. of Arts	1	0	0	1	17	5.88%
Bach. of Science	4	3	1	8	55	14.55%
Bach. of Science in Education	11	3	2	16	63	25.40%
<i>Nursing</i>						
Bach. of Science in Nursing	5	0	1	6	54	11.11%
<i>Total</i>	<i>43</i>	<i>33</i>	<i>13</i>	<i>89</i>	<i>503</i>	<i>17.7%</i>

Source: Office of the Registrar

Date: November 2012



Retention

**DELTA STATE
UNIVERSITY** 

Retention of First-Time, Full-Time Entering Freshmen*

(All First-Time, Full-Time Freshmen)

Retention and Graduation Rates	Year Entered													
	2005		2006		2007		2008		2009		2010		2011	
	#	%	#	%	#	%	#	%	#	%	#	%	#	%
All first-time entering freshmen	393	100%	463	100%	470	100%	392	100%	367	100%	372	100%	324	100%
Average ACT Score	20.3		20.3		20.2		20.3		20.1		20.5		20.3	
2nd Year - Returned	249	63%	281	61%	301	64%	246	63%	213	58%	231	62%		
3rd Year - Returned	187	48%	220	48%	220	47%	214	55%	163	44%				
Degrees thru 3 years*	4	1%	7	2%	6	1%	4	1%	3	1%				
4th Year - Returned	156	40%	193	42%	196	42%	169	43%						
Degrees thru 4 years*	67	17%	84	18%	82	17%	60	15%						
5th Year - Returned	84	21%	111	24%	112	24%								
Degrees thru 5 years*	108	27%	153	33%	135	29%								
6th Year - Returned	40	10%	37	8%										
Degrees thru 6 years*	127	32%	169	37%										
7th Year - Returned	16	4%												

**The retention rates presented herein may differ slightly from previous representations due to allowed adjustments to cohorts (deaths, military service, etc.)*

Note: The retention rates presented herein may differ slightly from previous representations due to changes in the methodology for student levels

Source: Office of Institutional Research and Planning

Date: November 2012

Retention of First-Time, Full-Time Entering Freshmen*

(First-Time, Full-Time White Freshmen)

	<i>Year Entered</i>													
	<i>2005</i>		<i>2006</i>		<i>2007</i>		<i>2008</i>		<i>2009</i>		<i>2010</i>		<i>2011</i>	
Retention and Graduation Rates	#	%	#	%	#	%	#	%	#	%	#	%	#	%
<i>All first-time entering freshmen</i>	240	100%	298	100%	267	100%	237	100%	199	100%	229	100%	200	100%
<i>Average ACT Score</i>	21.4		21.5		21.6		21.5		21.9		22		21.5	
2nd Year - Returned	160	67%	197	66%	188	70%	155	65%	129	65%	154	67%		
3rd Year - Returned	118	49%	158	53%	149	56%	137	58%	108	54%				
Degrees thru 3 years*	4	2%	5	2%	6	2%	2	1%	2	1%				
4th Year - Returned	103	43%	142	48%	133	50%	103	43%						
Degrees thru 4 years*	48	20%	64	21%	68	25%	44	19%						
5th Year - Returned	56	23%	76	26%	65	24%								
Degrees thru 5 years*	77	32%	114	38%	100	37%								
6th Year - Returned	23	10%	22	7%										
Degrees thru 6 years*	87	36%	122	41%										
7th Year - Returned	12	5%												

**The retention rates presented herein may differ slightly from previous representations due to allowed adjustments to cohorts (deaths, military service, etc.)*

Note: The retention rates presented herein may differ slightly from previous representations due to changes in the methodology for student levels

Source: Office of Institutional Research and Planning

Date: July 2012

Retention of First-Time, Full-Time Entering Freshmen*

(First-Time, Full-Time Black Freshmen)

	Year Entered													
	2005		2006		2007		2008		2009		2010		2011	
Retention and Graduation Rates	#	%	#	%	#	%	#	%	#	%	#	%	#	%
All first-time entering freshmen	144	100%	157	100%	192	100%	144	100%	158	100%	133	100%	118	100%
Average ACT Score	18.4		18.0		18.2		18.3		17.9		18		18.2	
2nd Year - Returned	83	58%	80	51%	107	56%	82	57%	79	50%	73	55%		
3rd Year - Returned	65	45%	58	37%	66	34%	69	48%	52	33%				
Degrees thru 3 years*	0	0%	2	1%	0	0%	2	1%	1	1%				
4th Year - Returned	49	34%	46	29%	58	30%	58	40%						
Degrees thru 4 years*	17	12%	17	11%	13	7%	14	10%						
5th Year - Returned	27	19%	33	21%	43	22%								
Degrees thru 5 years*	28	19%	35	22%	30	16%								
6th Year - Returned	16	11%	14	9%										
Degrees thru 6 years*	36	25%	42	27%										
7th Year - Returned	4	3%												

*The retention rates presented herein may differ slightly from previous representations due to allowed adjustments to cohorts (deaths, military service, etc.)

Note: The retention rates presented herein may differ slightly from previous representations due to changes in the methodology for student levels

Source: Office of Institutional Research and Planning

Date: July 2012

Retention of First-Time, Full-Time Entering Freshmen*

(First-Time, Full-Time Other Race/Ethnicity)

Retention and Graduation Rates	Year Entered													
	2005***		2006***		2007***		2008***		2009***		2010***		2011***	
	#	%	#	%	#	%	#	%	#	%	#	%	#	%
All first-time entering freshmen	9	100%	8	100%	11	100%	11	100%	10	100%	10	100%	6	100%
Average ACT Score	21.3		20.0		21.5		20.5		19.6		20.1		22.4	
2nd Year - Returned	6	67%	4	50%	6	55%	9	82%	5	50%	4	40%		
3rd Year - Returned	4	44%	4	50%	5	45%	8	73%	3	30%				
Degrees thru 3 years	0	0%	0	0%	0	0%	0	0%	0	0%				
4th Year - Returned	4	44%	5	63%	5	45%	8	73%						
Degrees thru 4 years	2	22%	3	38%	1	9%	3	27%						
5th Year - Returned	1	11%	2	25%	4	36%								
Degrees thru 5 years	3	33%	4	50%	4	36%								
6th Year - Returned	1	11%	1	13%										
Degrees thru 6 years	4	44%	5	63%										
7th Year - Returned	0	0%												

*The retention rates presented herein may differ slightly from previous representations due to allowed adjustments to cohorts (deaths, military service, etc.)

Note: The retention rates presented herein may differ slightly from previous representations due to changes in the methodology for student levels

**Other ethnicities include American Indian/Alaskan native, Asian, and Hispanic

***Because of such a small sample size, one should be cautious about generalizations regarding this sub-cohort

Source: Office of Institutional Research and Planning

Date: July 2011

Retention of First-Time, Full-Time Entering Freshmen*

(First-Time, Full-Time Male Freshmen)

	Year Entered													
	2005		2006		2007		2008		2009		2010		2011	
Retention and Graduation Rates	#	%	#	%	#	%	#	%	#	%	#	%	#	%
All first-time entering freshmen	171	100%	179	100%	181	100%	160	100%	137	100%	163	100%	140	100%
Average ACT Score	20.9		20.7		20.5		20.8		20.8		21		20.6	
2nd Year - Returned	111	65%	101	56%	119	66%	94	59%	75	55%	96	59%		
3rd Year - Returned	74	43%	77	43%	82	45%	78	49%	56	41%				
Degrees thru 3 years	0	0%	4	2%	0	0%	1	1%	0	0%				
4th Year - Returned	69	40%	67	37%	76	42%	64	40%						
Degrees thru 4 years	25	15%	32	18%	26	14%	19	12%						
5th Year - Returned	38	22%	35	20%	38	21%								
Degrees thru 5 years	47	27%	50	28%	40	22%								
6th Year - Returned	15	9%	9	5%										
Degrees thru 6 years	53	31%	55	31%										
7th Year - Returned	9	5%												

**The retention rates presented herein may differ slightly from previous representations due to allowed adjustments to cohorts (deaths, military service, etc.)*

Note: The retention rates presented herein may differ slightly from previous representations due to changes in the methodology for student levels

Source: Office of Institutional Research and Planning

Date: July 2011

Retention of First-Time, Full-Time Entering Freshmen*

(First-Time, Full-Time Female Freshmen)

	Year Entered													
	2005		2006		2007		2008		2009		2010		2011	
Retention and Graduation Rates	#	%	#	%	#	%	#	%	#	%	#	%	#	%
All first-time entering freshmen	222	100%	284	100%	289	100%	232	100%	230	100%	209	100%	184	100%
Average ACT Score	19.8		20.0		20.0		19.9		19.7		20.2		20.0	
2nd Year - Returned	138	62%	180	63%	182	63%	152	66%	138	60%	135	65%		
3rd Year - Returned	113	51%	143	50%	138	48%	136	59%	107	47%				
Degrees thru 3 years	4	2%	3	1%	6	2%	3	1%	3	1%				
4th Year - Returned	87	39%	126	44%	120	42%	105	45%						
Degrees thru 4 years	42	19%	52	18%	56	19%	42	18%						
5th Year - Returned	46	21%	76	27%	74	26%								
Degrees thru 5 years	61	27%	103	36%	94	33%								
6th Year - Returned	25	11%	28	10%										
Degrees thru 6 years	74	33%	114	40%										
7th Year - Returned	7	3%												

*The retention rates presented herein may differ slightly from previous representations due to allowed adjustments to cohorts (deaths, military service, etc.)

Note: The retention rates presented herein may differ slightly from previous representations due to changes in the methodology for student levels

Source: Office of Institutional Research and Planning

Date: August 2012

Retention of First-Time, Full-Time Entering Freshmen* (Pell Grant Awarded)

	Year Entered													
	2005		2006		2007		2008		2009		2010		2011	
Retention and Graduation Rates	#	%	#	%	#	%	#	%	#	%	#	%	#	%
All first-time entering freshmen	164	100%	176	100%	213	100%	203	100%	200	100%	197	100%	164	100%
Average ACT Score	18.8		19.1		18.9		19.3		18.9		19		19.2	
2nd Year - Returned	97	59%	96	55%	132	62%	121	60%	103	52%	85	43%		
3rd Year - Returned	77	47%	68	39%	82	38%	101	50%	74	37%				
Degrees thru 3 years	0	0%	2	1%	0	0%	2	1%	1	1%				
4th Year - Returned	57	35%	54	31%	76	36%	99	49%						
Degrees thru 4 years	15	9%	17	10%	19	9%	33	16%						
5th Year - Returned	39	24%	37	21%	61	29%								
Degrees thru 5 years	29	18%	42	24%	46	22%								
6th Year - Returned	23	14%	20	11%										
Degrees thru 6 years	40	24%	52	30%										
7th Year - Returned	11	7%												

*The retention rates presented herein may differ slightly from previous representations due to allowed adjustments to cohorts (deaths, military service, etc.)

Note: The retention rates presented herein may differ slightly from previous representations due to changes in the methodology for student levels

Source: Office of Institutional Research and Planning

Date: August 2012

Retention of First-Time, Full-Time Entering Freshmen* (Non-Pell Grant Awarded)

	<i>Year Entered</i>													
	<i>2005</i>		<i>2006</i>		<i>2007</i>		<i>2008</i>		<i>2009</i>		<i>2010</i>		<i>2011</i>	
<i>Retention and Graduation Rates</i>	#	%	#	%	#	%	#	%	#	%	#	%	#	%
<i>All first-time entering freshmen</i>	229	100%	287	100%	257	100%	189	100%	167	100%	175	100%	160	100%
<i>Average ACT Score</i>	21.4		21.0		21.3		21.3		21.6		22.3		21.5	
2nd Year - Returned	152	66%	185	64%	169	66%	125	66%	110	66%	145	83%		
3rd Year - Returned	110	48%	152	53%	138	54%	113	60%	74	44%				
Degrees thru 3 years	4	2%	5	2%	6	2%	2	1%	1	1%				
4th Year - Returned	99	43%	139	48%	120	47%	70	37%						
Degrees thru 4 years	52	23%	67	23%	63	25%	28	15%						
5th Year - Returned	45	20%	74	26%	51	20%								
Degrees thru 5 years	79	34%	111	39%	88	34%								
6th Year - Returned	17	7%	17	6%										
Degrees thru 6 years	87	38%	117	41%										
7th Year - Returned	5	2%												

**The retention rates presented herein may differ slightly from previous representations due to allowed adjustments to cohorts (deaths, military service, etc.)*

Note: The retention rates presented herein may differ slightly from previous representations due to changes in the methodology for student levels

Source: Office of Institutional Research and Planning

Date: August 2012

Retention of First-Time, Full-Time Entering Freshmen* (Receiving Title IV Subsidized Loans)

	Year Entered													
	2005		2006		2007		2008		2009		2010		2011	
Retention and Graduation Rates	#	%	#	%	#	%	#	%	#	%	#	%	#	%
All first-time entering freshmen	168	100%	167	100%	215	100%	192	100%	186	100%	199	100%	173	100%
Average ACT Score	18.8		18.8		18.8		19.4		18.7		19.1		20.1	
2nd Year - Returned	101	60%	95	57%	138	64%	109	57%	92	49%	105	53%		
3rd Year - Returned	82	49%	70	42%	87	40%	91	47%	68	37%				
Degrees thru 3 years	0	0%	2	1%	0	0%	2	1%	1	1%				
4th Year - Returned	59	35%	58	35%	76	35%	74	39%						
Degrees thru 4 years	21	13%	19	11%	16	7%	21	11%						
5th Year - Returned	36	21%	39	23%	54	25%								
Degrees thru 5 years	33	20%	42	25%	39	18%								
6th Year - Returned	21	13%	19	11%										
Degrees thru 6 years	42	25%	51	31%										
7th Year - Returned	8	5%												

*The retention rates presented herein may differ slightly from previous representations due to allowed adjustments to cohorts (deaths, military service, etc.)

Note: The retention rates presented herein may differ slightly from previous representations due to changes in the methodology for student levels

Source: Office of Institutional Research and Planning

Date: July 2012

Retention of First-Time, Full-Time Entering Freshmen* (Receiving Title IV Non-Subsidized Loans)

	Year Entered													
	2005		2006		2007		2008		2009		2010		2011	
Retention and Graduation Rates	#	%	#	%	#	%	#	%	#	%	#	%	#	%
All first-time entering freshmen	225	100%	296	100%	255	100%	200	100%	181	100%	173	100%	193	100%
Average ACT Score	21.4		21.1		21.4		21.2		21.6		22.1		21.2	
2nd Year - Returned	148	66%	186	63%	163	64%	137	69%	121	67%	125	72%		
3rd Year - Returned	105	47%	150	51%	133	52%	123	62%	95	52%				
Degrees thru 3 years	4	2%	5	2%	6	2%	2	1%	2	1%				
4th Year - Returned	97	43%	135	46%	120	47%	95	48%						
Degrees thru 4 years	46	20%	65	22%	66	26%	40	20%						
5th Year - Returned	48	21%	72	24%	58	23%								
Degrees thru 5 years	75	33%	111	38%	95	37%								
6th Year - Returned	19	8%	18	6%										
Degrees thru 6 years	85	38%	118	40%										
7th Year - Returned	8	4%												

**The retention rates presented herein may differ slightly from previous representations due to allowed adjustments to cohorts (deaths, military service, etc.)*

Note: The retention rates presented herein may differ slightly from previous representations due to changes in the methodology for student levels

Source: Office of Institutional Research and Planning

Date: July 2012

Retention of First-Time, Full-Time Entering Freshmen* (U.S. Citizens/Resident Aliens)**

	Year Entered													
	2005		2006		2007		2008		2009		2010		2011	
Retention and Graduation Rates	#	%	#	%	#	%	#	%	#	%	#	%	#	%
All first-time entering freshmen	384	100%	459	100%	467	100%	388	100%	355	100%	362	100%	316	100%
Average ACT Score	20.2		20.3		20.2		20.3		20.1		20.5		20.3	
2nd Year - Returned	243	53%	278	60%	298	77%	242	68%	209	58%	226	62%		
3rd Year - Returned	184	40%	218	47%	219	56%	211	59%	161	44%				
Degrees thru 3 years	4	1%	7	2%	6	1%	4	1%	3	1%				
4th Year - Returned	153	33%	192	41%	196	51%	168	43%						
Degrees thru 4 years	65	17%	84	18%	82	18%	60	15%						
5th Year - Returned	84	18%	111	24%	112	24%								
Degrees thru 5 years	105	27%	153	33%	135	29%								
6th Year - Returned	40	9%	37	8%										
Degrees thru 6 years	124	32%	169	37%										
7th Year - Returned	17	4%												

*The retention rates presented herein may differ slightly from previous representations due to allowed adjustments to cohorts (deaths, military service, etc.)

**A table with corresponding information about non-resident aliens is not provided due to the small number of students in this category

Source: Office of Institutional Research and Planning

Date: August 2012



Faculty and Staff

**DELTA STATE
UNIVERSITY** 

Summary of Faculty by Race & Gender Fall 2011

	<i>White</i>		<i>Black</i>		<i>Other</i>		<i>Total</i>	
	<i>#</i>	<i>%</i>	<i>#</i>	<i>%</i>	<i>#</i>	<i>%</i>	<i>#</i>	<i>%</i>
Full-time Male	82	89%	4	4%	6	7%	92	36%
Part-time Male	19	100%	0	0%	0	0%	19	7%
Full-time Female	73	79%	15	16%	4	4%	92	36%
Part-time Female	45	83%	7	13%	2	4%	54	21%
Total	219	85.2%	26	10.1%	12	4.7%	257	100.0%

Summary of Faculty by Gender & Academic Rank; Salary Comparison Fall 2011

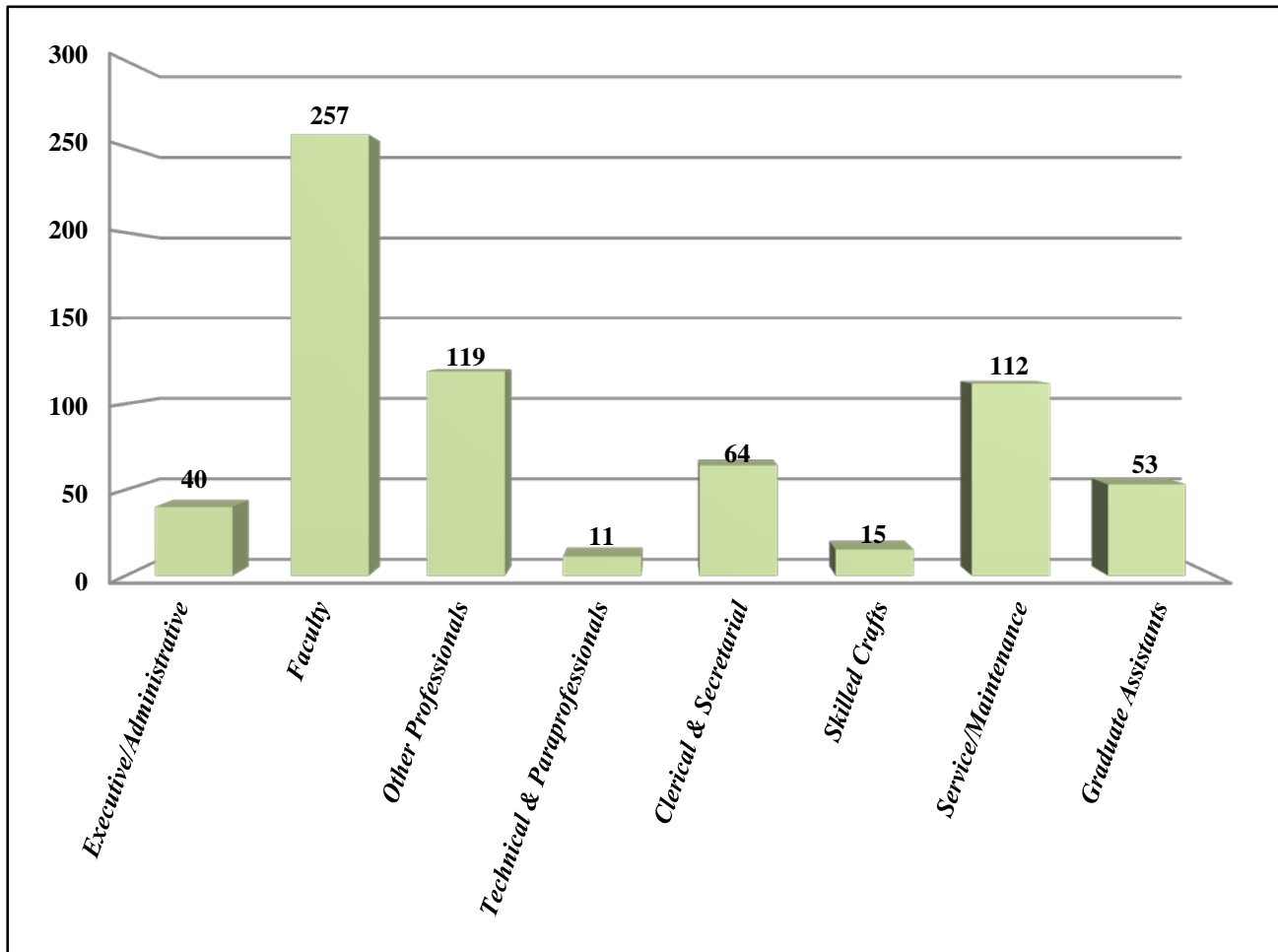
	<i>Contract Length</i>			
	<i>9/10 Month</i>		<i>11/12 Month</i>	
	<i>Number</i>	<i>Average Salary</i>	<i>Number</i>	<i>Average Salary</i>
Men				
Professor	16	\$67,862.00	7	\$76,686.86
Associate Professor	18	\$54,662.28	7	\$69,895.43
Assistant Professor	15	\$43,567.53	4	\$61,356.50
Instructors	17	\$41,590.94	4	\$71,093.75
Total Men	66	\$51,974	22	\$70,722
Women				
Professor	8	\$59,988.25	1	\$77,013.00
Associate Professor	16	\$57,711.38	6	\$72,894.17
Assistant Professor	29	\$50,442.03	8	\$57,157.25
Instructors	28	\$47,926.96	2	\$85,912.50
Total Women	81	\$51,951	17	\$67,262
Grand Total	147	\$51,961	39	\$69,214

Source: Office of Institutional Research and Planning

Date: August 2012

Total Faculty & Staff Fall 2011

<i>Faculty & Staff</i>	<i>Number</i>	<i>Percentage</i>
Executive/Administrative	40	5.96%
Faculty	257	38.30%
Other Professionals	119	17.73%
Technical & Paraprofessionals	11	1.64%
Clerical & Secretarial	64	9.54%
Skilled Crafts	15	2.24%
Service/Maintenance	112	16.69%
Graduate Assistants	53	7.90%
<i>Total Faculty/Staff</i>	<i>671</i>	<i>100.00%</i>

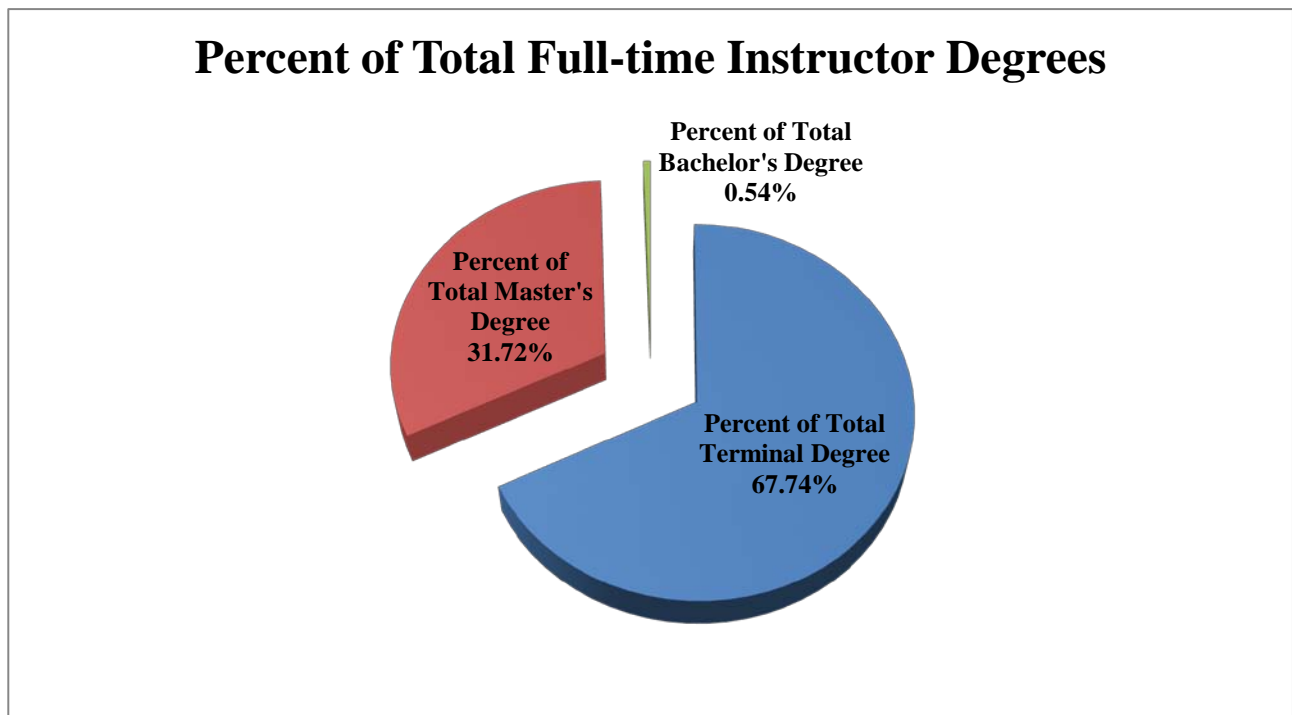


Source: Office of Institutional Research and Planning
Date: August 2012

Delta State University Faculty/Instructor Degrees Fall 2011

	Full-time	Part-time	Total
Highest Degree is Terminal	126	31	157
Highest Degree is Master's	59	35	94
Highest Degree is Bachelor's	1	2	3

	Full-time	Part-time	Total
Percent of Total Terminal Degree	67.74%	45.59%	61.81%
Percent of Total Master's Degree	31.72%	51.47%	37.01%
Percent of Total Bachelor's Degree	0.54%	2.94%	1.18%



Source: Office of Institutional Research and Planning
Date: August 2012



Resources

**DELTA STATE
UNIVERSITY** 

**Men's & Women's Residence Halls Comparative Report
5-Year Trend (2007-2011)**

<i>Residence Halls</i>	<i>Capacity</i>					
		<i>10/01/07</i>	<i>10/01/08</i>	<i>10/01/09</i>	<i>10/01/10</i>	<i>10/01/11</i>
Men's						
Bond-Carpenter	N/A	79	closed	closed	closed	closed
Brewer	65	women	52	63	35	14
Clark	66	40	62	50	46	37
Foundation Hall	162	N/A	N/A	N/A	113	126
Longino	60	37	54	41	42	32
New Men's Hall	179	137	162	144	131	134
Noel	66	47	63	50	32	9
Whittington-Williams	N/A	90	closed	closed	closed	closed
Totals	598	430	393	348	399	352
Classification						
Freshmen		168	148	115	164	151
Sophomores		87	69	69	66	71
Juniors		99	100	89	97	81
Seniors		69	71	71	68	44
Graduates		7	5	4	4	5
Totals		430	393	348	399	352
Women's						
Brewer	N/A	22	men	men	men	men
Brumby-Castle	176	138	164	160	171	157
Cain-Tatum	58	72	74	82	26	0
Cleveland	52	50	52	53	25	19
Foundation Hall	193	N/A	N/A	N/A	130	146
Fugler-Hammett	0	96	108	86	0	0
Lawler-Harkins	172	205	160	138	132	132
Totals	651	583	558	519	484	454
Classification						
Freshmen		238	215	200	191	157
Sophomores		135	144	121	100	107
Juniors		122	110	123	108	121
Seniors		83	83	67	79	63
Graduates		5	6	8	6	6
Totals		583	558	519	484	454
Combined Men and Women						
Freshmen		406	363	315	355	308
Sophomores		222	213	190	166	178
Juniors		221	210	212	205	202
Seniors		152	154	138	147	107
Graduates		12	11	12	10	11
Totals	1,249	1,013	951	867	883	806

Source: Housing & Residence Life- August 2012

Financial Aid Summary 2010-11 & 2011-12

	<i>Students</i>	<i>Award 2010-11</i>	<i>Students</i>	<i>Award 2011-12</i>
<i>Students Loans</i>				
Subsidized Stafford Loans	2019	\$8,933,983	2126	\$9,479,493
Unsubsidized Stafford Loans	2066	\$8,050,734	2138	\$8,483,925
Parent PLUS Loans	145	\$736,895	159	\$1,015,133
Perkins Loans	139	\$250,019	120	\$259,556
<i>Total</i>	<i>4,369</i>	<i>\$17,971,631</i>	<i>4,543</i>	<i>\$19,238,107</i>
<i>Grants & Work-Study</i>				
Pell Grant	1601	\$6,924,917	1615	\$6,321,977
SEOG	240	\$146,735	180	\$100,887
LEAP	34	\$23,102	N/A	N/A
ACG	83	\$64,813	N/A	N/A
SMART	13	\$52,000	N/A	N/A
Federal Work Study	279	\$353,006	248	\$325,566
<i>Total</i>	<i>2,250</i>	<i>\$7,564,573</i>	<i>2,043</i>	<i>\$6,748,430</i>
<i>Institutional Scholarships/Funds</i>				
Academic Scholarships	426	\$540,913	397	\$578,344
Athletic Scholarships	291	\$993,997	325	\$1,007,831
Foundation Scholarships	314	\$298,561	342	\$413,224
Music Scholarships	135	\$283,509	127	\$230,917
Other Service ¹	25	\$55,732	25	\$39,226
Dependent Scholarships	43	\$94,417	38	\$85,924
Honor Scholarships	52	\$99,917	51	\$95,076
Teach for America	19	\$9,180	9	\$5,188
VP Scholarship	N/A	N/A	4	\$24,695
<i>Total</i>	<i>1,305</i>	<i>\$2,376,226</i>	<i>1,318</i>	<i>\$2,480,425</i>
<i>Total Aid All Types</i>				
Title IV Accepted	2793	\$25,536,204	2655	\$25,986,548
Institutional Scholarships	572	\$2,376,226	495	\$2,480,425
Institutional Administered Outside ²	345	\$1,296,560	174	\$730,999
State Scholarships ³	603	\$804,278	693	\$924,926
Out of State Scholarships ⁴	314	\$1,986,878	279	\$1,991,924
Outside Sources	N/A	\$1,740,386	N/A	\$1,424,046
Private Loans	55	\$324,710	78	\$453,619
<i>Total</i>⁵	<i>3,354</i>	<i>\$34,065,242</i>	<i>3,330</i>	<i>\$33,992,487</i>

¹ Other Service includes Art, SGA, Student Union, Student Editors

² Institutional Administered Outside includes Hearin Fellows, Hearin-Admissions, Delta Health Education, DHI Leadership (COETC), Graduate-Special Education, Graduate-Counseling, Professional Nurse Trainee, Nursing-DHI, Veterans Chapter 33, WIA, GLOBAL

³ State Scholarships include FUND, Critical Needs, HELP, MTAG, MESH, Nursing, William Winter, Summer Development, GTS, Gear Up

⁴ Out of State Scholarships include Academic, Alumni, Athletic, Delta Regional, Graduate, Music, Regional, Student Affairs

⁵ Total Students are unduplicated

Source: Office of Financial Aid- November 2012

Roberts-LaForge Library Collections and Utilizations 2006-2012

<i>Library Collections</i>	2007-08	2008-09	2009-10	2010-11	2011-12
Bound Volumes					
Books	271,027	273,496	276,507	277,449	278,685
U.S. Government Documents	30,367	30,772	30,926	30,937	30,827
Mississippi State Government Documents	4,472	4,601	4,708	4,808	4,926
Bound journals	53,497	53,186	53,557	53,739	54,084
Bound Indexes	5,760	5,762	5,762	5,762	5,762
Total Bound Volumes	365,123	367,817	371,460	371,460	374,284
Electronic Books	59,856	63,040	63,119	67,870	71,342
Microforms	831,950	832,093	832,551	832,799	832,822
Audio Visual Materials					
LP records	8,894	8,888	8,894	8,895	8,894
Music CDs	1,127	1,203	1,289	1,329	1,345
Sound Recordings	3,437	3,239	3,231	3,240	3,224
Video/ DVD Recordings	5,553	5,683	5,783	6,074	5,114
Other	1,396	1,408	1,414	1,494	1,451
Total Audio Visual Materials	20,407	20,421	20,611	21,032	20,028
Journal Subscriptions-Hardcopy	1,249	1,180	926	874	878
Journal Subscriptions-Electronic Full-Text	21,935	24,327	24,207	24,396	23,140
Electronic Databases	124	106	98	89	83
Circulation of Materials Outside the Building	27,188	26,461	31,097	35,012	33,958
Circulation of Reserve Materials	6,607	12,071	8,054	6,500	2,736
Items Borrowed from Other Libraries	1,131	853	1,038	1,440	1,260
Items Loaned to Other Libraries	1,144	1,138	1,148	1,044	945
Electronic Index and Full-Text Database Searches	318,840	515,535	519,318	637,577	584,199
Instruction Provided To:					
Classes	155	164	142	154	145
Students	4,250	4,332	4,176	4,329	4,038
Library Users-Onsite	176,039	165,153	155,608	150,073	130,394
Age of Collections:					
Percent of holdings 5 or fewer years old	7.00%	6.50%	6.00%	5.50%	5.50%
Percent of holdings 10 or more years old	77.00%	78.70%	78.50%	80.10%	80.10%

Source: Roberts-LaForge Library

Date: August 2012

Intercollegiate Athletics

2011-2012

<i>Teams</i>	<i>2011-2012 Record</i>	
	<i>Wins</i>	<i>Losses</i>
Baseball	49	15
Basketball:		
Men's	6	21
Women's	22	7
Women's Cross-Country	NA	
Golf	NA	
Soccer:		
Men's	5	12
Women's	5	12
Women's Softball	29	31
Tennis:		
Men's	8	9
Women's	6	11
Swimming & Diving:		
Men's	NA	
Women's	NA	
Football	11	3

<i>Athletic Facilities</i>	<i>Seating Capacity</i>
Parker Field (Football)	8,000
Walter Sillers Coliseum (Basketball)	3,150
Ferriss Field (Baseball)	1,500
DSU Aquatics Center (Swimming, Diving)	1,000
DSU Softball Field (Softball)	500
DSU Soccer Field (Soccer)	100

<i>General Information</i>	
Division	National Collegiate Athletic Association (NCAA Division II)
Conference	Gulf South Conference
Mascot	Statesmen, Lady Statesmen, Fighting Okra (unofficial)
Colors	Forest Green and White

Source: Office of Sports Information

Date: October 2012

Intercollegiate Athletics

2011-2012

<i>Teams</i>	<i>Last Title/Championship</i>
Baseball	2008 Gulf South Conference Champions
	2005 NCAA South Central Region Champions
	2004 Division II National Champions
	2004 Gulf South Conference Champions
Basketball:	
Men's	2006 Gulf South Conference Champions
Women's	2009 Gulf South Conference Champions
Women's Cross-Country	2010 5th Place GSC Cross Country Championship
Golf	2005 Gulf South Conference Champions
Soccer:	
Men's	
Women's	
Women's Softball	2006 Gulf South Conference West Division Champions
Tennis:	
Men's	2003 3rd Place Gulf South Conference Tournament
Women's	2010 3rd Place Gulf South Conference Tournament
Swimming & Diving:	
Men's	2003 New South Intercollegiate Swim Conference Champions
Women's	2003 New South Intercollegiate Swim Conference Champions
Football	2010 NCAA DII National Champion Runner-Up
	2010 Gulf South Conference Champions
	2000 NCAA Division II National Champions

Source: Office of Sports Information

Date: July 2011

Tuition and Fees

2011-2012

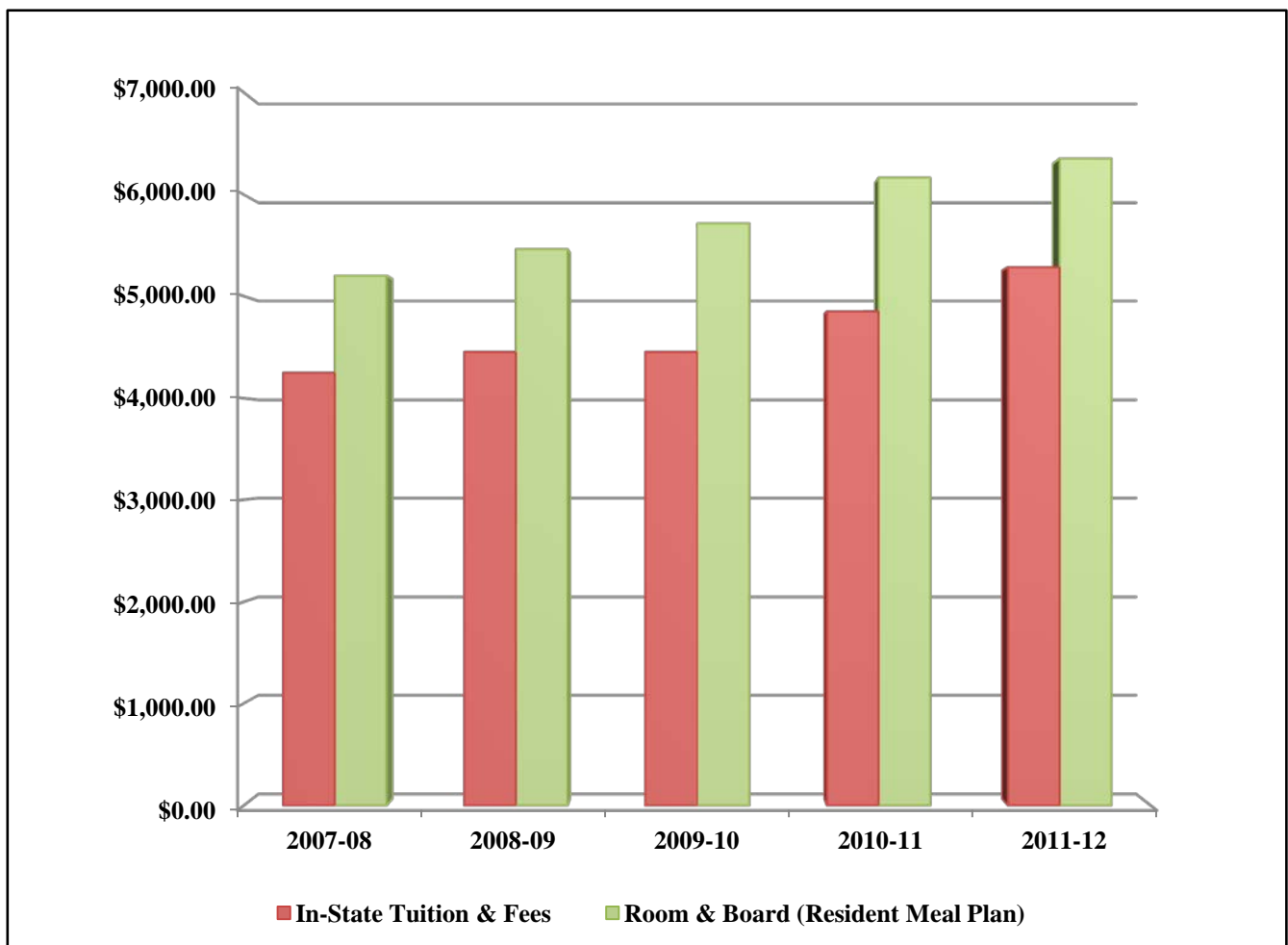
<i>Tuition & Fees for Full-Time Students</i>	
Undergraduate 12 - 19 Hours	\$2,644.00
Graduate 9 - 13 hours	\$2,644.00
<i>Out-of-State (Non-Resident) Fee</i>	
	\$4,200.00
<i>Part-Time Tuition/Overload Fees (Per Credit Hour)</i>	
<i>In-State</i>	
Undergraduate	\$220.00
Graduate	\$294.00
<i>Out-of-State</i>	
Undergraduate	\$570.00
Graduate	\$760.00
<i>Room Rates</i>	
Foundation Hall	\$2,189.00
Brumby Castle, Court of Governors, New Men's	\$1,835.50
Cain-Tatum, Cleveland, Fugler-Hammett, Lawler-Harkins	\$1,767.50
Additional private room rate	\$800.00
<i>Meal Plans</i>	
<i>Choice of Following Plans for Residential Students:</i>	
Unlimited +\$150 Flex	\$1,245.50
12 Meals per week + \$250 Flex	
10 Meals per week + \$350 Flex	
Senior Residents Plan 80 Block + \$650 Flex	
<i>For Commuters:</i>	
campus	\$154.50
<i>Additional Plans for Commuters:</i>	
120 Meals per semester	\$600.00
80 Meals per semester	\$425.00
40 Meals per semester	\$225.00

Source: Student Business Services

Date: 2011-2012 Academic Year

Tuition and Fees 5-Year Trend 2007-2012

<i>Academic Year</i>	<i>In-State Tuition & Fees</i>	<i>Room & Board (Resident Meal Plan)</i>
2007-08	\$4,248.00	\$5,204.44
2008-09	\$4,450.00	\$5,463.34
2009-10	\$4,450.00	\$5,714.00
2010-11	\$4,852.00	\$6,166.00
2011-12	\$5,288.00	\$6,352.00



Source: Student Business Services

Date: August 2012



Glossary

**DELTA STATE
UNIVERSITY** 

List of Course Prefixes

ACC	<i>Accounting</i>
AED	<i>Rural School Leadership and Research Administration</i>
AMU	<i>Applied Music</i>
ANT	<i>Anthropology</i>
AUP	<i>Audiology and Speech Pathology</i>
ART	<i>Art</i>
BIO	<i>Biology</i>
BIS	<i>Interdisciplinary Studies</i>
CAV	<i>Commercial Aviation</i>
CED	<i>Counseling</i>
CEL	<i>Elementary Education</i>
CHE	<i>Chemistry</i>
CIS	<i>Computer Information Systems</i>
CML	<i>Media-Library Science</i>
COD	<i>Community Development</i>
COM	<i>Communication Studies</i>
CRD	<i>Reading</i>
CRJ	<i>Criminal Justice</i>
CSD	<i>Secondary Education</i>
CSP	<i>Special Education</i>
CUR	<i>Teacher Education Curriculum</i>
DMI	<i>Delta Music Institute</i>
ECO	<i>Economics</i>
EDL	<i>Educational Leadership</i>
ELR	<i>Research</i>
ENG	<i>English</i>
EPY	<i>Educational Psychology</i>
FCS	<i>Family and Consumer Sciences</i>
FIN	<i>Finance</i>
FRE	<i>French</i>
GBA	<i>General Business</i>
GEO	<i>Geography</i>
GER	<i>German</i>
GIS	<i>Geospatial Information Systems</i>
GMT	<i>Gaming Management</i>
GST	<i>General Studies</i>
HIS	<i>History</i>
HSE	<i>Health and Safety Education</i>
HSM	<i>Hospitality Services Management</i>
IRR	<i>Insurance and Real Estate</i>
JOU	<i>Journalism</i>
LIB	<i>Library</i>
MAT	<i>Mathematics</i>
MBA	<i>Master of Business Administration Program</i>

MGT	<i>Management</i>
MKT	<i>Marketing</i>
MSC	<i>Military Science</i>
MUS	<i>Music</i>
NUR	<i>Nursing</i>
OAD	<i>Office Administration</i>
PER	<i>Physical Education and Recreation</i>
PHI	<i>Philosophy</i>
PHY	<i>Physics</i>
PSC	<i>Political Science</i>
PSY	<i>Psychology</i>
REM	<i>Remote Sensing</i>
RRS	<i>Rural and Regional Studies</i>
SHS	<i>Speech and Hearing Science</i>
SOC	<i>Sociology</i>
SPA	<i>Spanish</i>
SPE	<i>Speech</i>
SRT	<i>Sound Recording Technology</i>
SSC	<i>Social Science</i>
SUP	<i>Supervision</i>
SWO	<i>Social Work</i>
THE	<i>Theatre</i>

List of Degrees

Bachelor's	
BA	<i>Bachelor of Arts</i>
BBA	<i>Bachelor of Business</i>
BME	<i>Bachelor of Music Education</i>
BS	<i>Bachelor of Science</i>
BSJC	<i>Bachelor of Science in Social Justice & Criminology</i>
BSE	<i>Bachelor of Science in Education</i>
BSIS	<i>Bachelor of Science in Interdisciplinary Studies</i>
BSN	<i>Bachelor of Science in Nursing</i>
BSW	<i>Bachelor of Social Work</i>
Master's	
MAT	<i>Master of Arts in Teaching</i>
MBA	<i>Master of Business Administration</i>
MCA	<i>Master of Commercial Aviation</i>
MPA	<i>Master of Professional Accountancy</i>
MED	<i>Master of Education</i>
MSCD	<i>Master of Science in Community Development</i>
MSJC	<i>Master of Science in Social Justice and Criminology</i>
MSN	<i>Master of Science in Nursing</i>
MSNS	<i>Master of Science in Natural Sciences</i>
Specialist's	
EDS	<i>Educational Specialist</i>

Doctoral	
EDD	<i>Doctor of Education</i>

Other Terminology

25th Percentile	<i>A score at the 25th percentile means that 25% of all the scores are below that score and 75% of all the scores are above that score.</i>
75th Percentile	<i>A score at the 75th percentile means that 75% of all the scores are below that score and 25% of all the scores are above that score.</i>
ACT	<i>A standardized achievement examination for college admissions</i>
API	<i>Academic Program Inventory</i>
CHP	<i>Credit Hour Production</i>
Cohort	<i>A group of subjects (students) that experience an event within the same time-span. Most noted as “freshmen cohort.” Those students that begin within the same Academic Year and are tracked within a six year time-span.</i>
Duplicated	<i>Consists of all student who are counted at all campuses attended</i>
Ethnicity	<i>Identity with or membership in a particular racial, national, or cultural group</i>
Federal Work Study	<i>Disbursed awards from the Federal College Work Study Program</i>
FTE	<i>Full Time Equivalent</i>
Full-time	<i>An undergraduate student is considered full-time if he/she takes course work equivalent to greater than eleven credit hours and a graduate student is considered full-time if he/she takes course work equivalent to greater than nine credit hours.</i>
IHL	<i>Institutions of Higher Learning</i>
LEAP	<i>Leveraging Educational Assistance Partnership</i>
Level	<i>Undergraduate or Graduate Student</i>
Median	<i>The numeric value which is found by arranging all data elements from lowest value to highest value and picking the middle one.</i>
Off-Campus	<i>Consists of the Coahoma and Greenville Center and Other designated locations</i>
On-Campus	<i>Consists of the Main Campus located in Cleveland, Mississippi</i>
Part-time	<i>An undergraduate student is considered part-time if he/she takes course work</i>
SEOG	<i>Supplemental Educational Opportunity Grant</i>
SLEAP	<i>Special Leveraging Educational Assistance Partnership</i>
SMART	<i>Disbursed awards to all students from the National Science & Mathematics Access to Retain Talent Grant (National Smart Grant); limited to upper-level undergraduates majoring in physical, life, or computer sciences, mathematics, technology, or engineering or in a foreign language determined critical to national security.</i>
TFA	<i>Teach For America is an American non-profit organization that aims to eliminate educational inequity by enlisting the nation's most promising future leaders to teach for two or more years in low-income communities throughout the United States.</i>
Unduplicated	<i>Consists of students who are counted only once across multiple campuses</i>